

THE FLORIDA STATE UNIVERSITY FACT BOOK



1984-85

ARCH

LD
1771
F892
A46
1984-85



REFERENCE
For Use In Library Only

ROBERT MANNING
STROZIER LIBRARY



Tallahassee

THE FLORIDA STATE UNIVERSITY

1984-1985 FACT BOOK

Budget and Analysis Department
Florida State University
Tallahassee, Florida 32306
904-644-4203

PREFACE

The 1984-85 Florida State University Fact Book provides the most current data available for a general description of the activities of the university. Student information is current through the Fall 1984 semester, or the 1983-84 academic year for annual figures. Other data are as current as could be obtained at the time of publication.

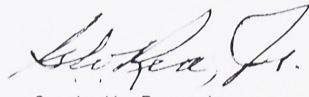
This book was prepared by the Institutional Research section of the Budget and Analysis Department and coordinated by Ms. Donna C. Smith. As you use this Fact Book, please advise this office of any additions or modifications which you feel would improve the contents of this book. Your comments are always welcome and suggestions for future content will be gratefully received.

Sincere thanks is extended to those offices that provided data or otherwise assisted in the production of this Fact Book.

Sincerely,


John M. Kalb
Acting Director
Institutional Research

Cordially,


Grady W. Rea, Jr.
Executive Director
Planning and Analysis

ARCH
LD
1771
F892
A46
1984-85
C.2

ROBERT MANNA
STROZIER

MAY 15 1985

Tallahassee, Florida

TABLE OF CONTENTS

INTRODUCTION

Preface.....	2
Table of Contents.....	3
History of The Florida State University.....	4
Presidents of the University.....	5
Honorary Degrees Awarded.....	6
Number of Graduates by Year.....	8
Accrediting Agencies.....	9
Academic Degree Program Inventory.....	10
Full-time Employees by Job Category.....	18
E&G Allocated Resources by Function.....	19

STUDENTS

Student Characteristics.....	20
Enrollment History.....	23
Headcount by Department and School/College.....	24
Student Headcount Enrollment by Level.....	28
Student Credit Hour Enrollment by School and College.....	29
Organizational Structure.....	40
Student Headcount by Discipline and Level.....	42
FSU Departments/Programs Included in CIP Discipline Categories.....	44
Geographical Origin of Students by Florida County.....	46
Student Headcount Enrollment by Florida County.....	48
Geographical Origin of Students by State.....	49
Student Headcount Enrollment by State.....	51
Student Headcount Enrollment by Residence.....	52
Geographical Origin of Students by Nation.....	53
Degrees Awarded by Schools and Colleges.....	54
Alumni by Current Residence.....	56

FACULTY

Faculty Characteristics.....	58
Mean Salary by Rank.....	59
Faculty by Rank.....	60
Percentage of Tenured and Non-Tenured Faculty.....	61
Robert O. Lawton Distinguished Professors.....	62
President's Teaching Awards.....	63
AMOCO/Standard Oil Foundation Awards.....	64
Developing Scholar Awards.....	65
Endowed Chairs.....	66

GENERAL

Institutes and Research Centers.....	67
Center for Professional Development and Public Service.....	70
Supercomputer.....	74
University Libraries.....	75
Student Organizations.....	76
Intercollegiate Athletics.....	77
Glossary.....	78

A BRIEF HISTORY OF THE FLORIDA STATE UNIVERSITY

Plans for higher education in Florida began in 1823 when the legislative council of the territory set aside for sale one township in East Florida and one in West Florida to support seminaries. The all-male Seminary West of the Suwannee was established in Tallahassee and the first classes were held in 1857. It closed briefly during the Civil War, reopening in 1866, although Seminary Cadets fought in the Battle of Natural Bridge south of Tallahassee in 1865. In 1901, the West Florida Seminary was officially named the Florida State College, and the first master's degree was offered the following year. In 1905, through the Buckman Act, the Legislature reorganized higher education in Florida, establishing a school for male students in Gainesville, and a school for female students in Tallahassee. The Florida State College in Tallahassee became the female school and was renamed the Florida State College for Women (F.S.C.W.) in 1909.

In 1946, a flood of applicants seeking admission to the University of Florida created a crisis situation as the number desiring admission was one-third more than could be accommodated. As a result, a branch accommodating 500 men was opened in Tallahassee at Dale Mabry Field, a deactivated army installation. In 1947, the Legislature took further action and designated both the University of Florida and Florida State College for Women as coeducational, at the same time changing the name of F.S.C.W. to The Florida State University.

Since that time, the university has grown to fourteen schools and colleges. Its mission is summarized in the opening paragraph of the Mission Statement of The Florida State University:

The Florida State University is a comprehensive, graduate-research university offering undergraduate, graduate, advanced graduate, and professional programs of study, conducting extensive research, and providing service to the public. Its primary role is to serve as a center for advanced graduate and professional studies while emphasizing extensive research and providing excellence in undergraduate programs.

THE FLORIDA STATE UNIVERSITY SEAL

The seal of The Florida State University has its origins in the first decade of the 20th century during the administration of President Albert A. Murphree. Designed by the combined talents of the Arts and Classics Departments, the torches of the seal symbolize the fire given to man by the Greek God Prometheus. This fire enabled man to elevate himself above the animals and become human. The torches of the FSU seal symbolize the purpose of the University: the passing on from generation to generation that which elevates man--knowledge.

The torch on the left is Vires: strength of all kinds, physical, moral, and intellectual. The center torch is Artes: that which we acquire -- knowledge which transcends skill, the appreciation of beauty. The torch on the right is Mores: customs, character and tradition. Through these three ideals the student is educated physically, mentally, and morally.

The seal first appeared on the cover of 1910-11 catalogue.

Source: "Florida State College for Women: Notes on the Formative Years," by William G. Dodd

PRESIDENTS OF THE UNIVERSITY SINCE 1909

Edward Conradi	1909 - 1941
Doak S. Campbell	1941 - 1957
Albert B. Martin (Acting President)	1957
Robert M. Strozier	1957 - 1960
Milton W. Carothers (Acting President)	1960
Gordon W. Blackwell	1960 - 1965
John E. Champion (Acting President)	1965
John E. Champion	1965 - 1969
Stanley Marshall (Acting President)	1969
Stanley Marshall	1969 - 1976
Bernard F. Sliger (Interim President)	1976 - 1977
Bernard F. Sliger	1977 -



Source: Office of the President

HONORARY DEGREES AWARDED

Conferred by
The Florida State University and The Florida State College for Women

<u>DATE</u>	<u>NAME</u>	<u>FIELD OF DISTINCTION</u>	<u>DOCTORIAL TITLE</u>
1912	Rowena Longmire	Education	Master of Arts
1935	Ruth Bryan Owen Rhode	Public Service	Laws
1950	Henri Bonnet	International Affairs	Humane Letters
	Mark Frederick Boyd	Medicine	Science
1952	Wouter Bleeker	Science	Science
1955	William Morrison Robinson, Jr.	History	Humanities
1956	Millard Fillmore Caldwell	Public Service	Laws
	LeRoy Collins	Public Service	Laws
	William George Dodd	Education	Literature
	Spessard Lindsey Holland	Public Service	Laws
	Philip Wylie	Literature	Literature
1957	Doak Sheridan Campbell	Education	Laws
	Ernst von Dohnanyi	Music	Music
	George A. Smathers	Public Service	Laws
1959	J. Velma Keen	Business	Laws
1960	Cyril O. Houle	Education	Laws
1961	Glen T. Seaborg	Science	Science
	Vivian Ahlswede Williams	Literature	Literature
1962	Leonard J. Brass	Science	Science
	Thomas B. Swann	Business/Public Service	Laws
1963	Pablo Casals	Music	Music
	Luther H. Hodges	Public Service/Business	Laws
	Karl Zerbe	Art	Fine Arts
1964	Cecil Farris Bryant	Public Service	Laws
	Edwin A. Menninger	Science	Science
	Dorothy Barclay Thompson	Journalism	Humane Letters
1965	Arthur Stanton Adams	Science/Public Service/ Education	Laws
	J. J. Daniel	Law/Business	Laws
	Robert J. Van de Graaff	Science	Science
1968	Michael E. DeBakey	Medicine	Science
	Lamar Dodd	Art/Education	Fine Arts
	Robert L. Shaw	Music	Music
1969	Lucius D. Battle	Public Service	Humane Letters
	Andres Segovia	Music	Music
1970	Alan S. Boyd	Public Service	Laws
	Audrey Wood Liebling	Literature	Humane Letters
	Gregor Piatigorsky	Music	Music
	Nelson Poynter	Public Service	Humane Letters
	Paul M. Rudolph	Architecture	Fine Arts
1971	Edwin V. Komarek	Science	Science
1972	Wilbur J. Cohen	Education	Humanities
	John Mackay Shaw	Poetry	Humanities

HONORARY DEGREES AWARDED

Conferred by
The Florida State University and The Florida State College for Women

<u>DATE</u>	<u>NAME</u>	<u>FIELD OF DISTINCTION</u>	<u>DOCTORIAL TITLE</u>
1973	Karl Dietrich Bracher	History	Humane Letters
	William D. McElroy	Science	Science
	Allen Morris	Public Service	Humane Letters
	Julia V. Morton	Science	Science
1975	Philip Handler	Science	Humanities
	Helen Hayes MacArthur	Theatre	Humane Letters
	King Hussein I (Hashemite-Jordan)	Public Service	Humane Letters
1976	Chester H. Ferguson	Education/Public Service	Humane Letters
	Stephen C. O'Connell	Education/Law	Humane Letters
1977	Mae Knight Clark	Education	Humane Letters
	Lee Strasberg	Theatre	Fine Arts
	Herbert Spencer Zim	Science/Education	Science
1978	Lillian Gordy Carter	Public Service	Humane Letters
	Michael Butler Yeats	International Affairs	Laws
	William H. Werkmeister	Philosophy	Humane Letters
1979	Rev. Charles K. Steele, Sr.	Public Service	Humane Letters
	William Styron	Literature	Literature
1980	B. K. Roberts	Public Service/Law	Humane Letters
1981	Burt Reynolds	Theatre	Humane Letters
1982	Roger L. Stevens	Theatre	Humane Letters
1983	Ricardo De La Espriella	Public Service	Laws
	Beth Walton Moor	Public Service	Humane Letters
	William C. Norris	Business/Public Service	Humane Letters
1984	Rafael Caldera	Public Service/Education	Humane Letters
	John P. McGovern	Medicine	Science

Source: Office of the President

NUMBER OF GRADUATES BY YEAR
(Selected Years)

1876	1
1886	1
1891	7
1895	2
1900	6
1905	14
1910	26
1915	37
1920	83
1925	217
1930	298
1935	332
1940	349
1945	381
1950	1,124
1955	978
1960	1,626
1965	2,863
1970	4,435
1975	5,062
1980	4,637
1981	5,027
1982	4,575
1983	4,518
1984	4,679
 TOTAL ALL YEARS	 122,684

Source: Office of Alumni Affairs

ACCREDITING AGENCIES FOR THE FLORIDA STATE UNIVERSITY*

COLLEGE OF ARTS & SCIENCES

American Chemical Society
American Psychological Association

COLLEGE OF BUSINESS

American Assembly of Collegiate Schools of Business

COLLEGE OF COMMUNICATION

American Speech and Hearing Association

COLLEGE OF EDUCATION

National Recreation and Park Association
Council of Rehabilitation Education, Inc.
Florida State Department of Education
National Council for the Accreditation of Teacher Education (NCATE)

COLLEGE OF HOME ECONOMICS

American Association of Marriage and Family Therapists
American Home Economics Association
NCATE (Home Economics Education)

COLLEGE OF LAW

American Bar Association
Association of American Law Schools

SCHOOL OF LIBRARY AND INFORMATION STUDIES

American Library Association

SCHOOL OF MUSIC

National Association of Schools of Music

SCHOOL OF NURSING

National League for Nursing

SCHOOL OF SOCIAL WORK

Council on Social Work Education (CSWE)

SCHOOL OF THEATRE

National Association of Schools of Theatre

SCHOOL OF VISUAL ARTS

Foundation for Interior Design Educational Research (FIDER)
National Association of Schools of Dance
NCATE (Art Education)

*As of Fall 1984

Source: Office of Budget and Analysis

ACADEMIC DEGREE PROGRAM INVENTORY, MARCH, 1985

BOR APPROVED DEGREE PROGRAM & CIP CATEGORY	APPROVED LEVELS					MAJOR	MAJOR CODE
	B	M	A	S	D		
<u>Architecture & Environmental Design</u>							
Urban & Regional Planning		M			D	Planning	329710
						Urban & Regional Planning	329720
Interior Design		B	M			Interior Design	422610
<u>Area and Ethnic Studies</u>							
American Studies		B	M			American Studies	110410
Asian Studies		B	M			Asian Studies	111710
						Asian Studies/Business	111711
Slavic & East European Studies		B	M			Slavic & East European Studies	994000
Inter-American Studies		B				Inter-American Studies	118010
<u>Business and Management</u>							
Business Administration		B	M		D	Business Administration**	211310
						Business, Undecided (NFA)**	219910
						Business, NFA	219999
Accounting		B	M			Accounting**	210110
Finance		B	M			Finance**	214310
Management		B	M			Management**	216610
						Purchasing & Materials Management**	216611
						Human Resource Management**	216612
						Management Information Systems**	216613
Hospitality Administration		B				Hospitality Administration**	215710
Risk Management - Insurance		B	M			Risk Management-Insurance**	216210
Multinational Business		B				Multinational Business Operations**	219510
Marketing		B	M			Marketing**	216710
Real Estate		B				Real Estate**	216220
<u>Communications</u>							
Communication		B	M		D	Media Performance**	410101
						Media Communication**	410102
						Media Production**	410103
						Political Communication**	410104
						Interpersonal Communication**	410106
						Communication Studies**	410107

KEY: See final page of Program Inventory

**Entrance into this major requires prior approval by school/college

ACADEMIC DEGREE PROGRAM INVENTORY, MARCH, 1985

BOR APPROVED DEGREE PROGRAM & CIP CATEGORY	APPROVED LEVELS						MAJOR	MAJOR CODE
	B	M	A	S	D	P		
	B	M			D			
Communication (Continued)							Comm. as a Liberal Art**	410108
							Communication for Business**	410109
							Organizational Communication**	410110
							Mass Communication**	410111
							Speech Communication**	410112
							Comm. Theory & Research**	410114
							Public Relations**	410120
							Communication/Art**	410125
							Communication/Science**	410130
							Communications, NFA	419999
<u>Computer and Information Sciences</u>								
Computer & Information Science	B	M			D		Computer Science	116610
							Computer Science, NFA	116699
<u>Education</u>								
Educational Administration		M		S	D		Educational Admin. & Supervision	220604
							Educational Policy, Planning, and Analysis	220605
Higher Education		M		S	D		Higher Education	220602
Media Education		M					Media Education	220308
Instructional Systems		M		S	D		Instructional Systems	220307
Educational Research & Testing		M		S	D		Research Design & Statistics	220301
							Institutional Research	220302
Evaluation & Measurement		M		S	D		Measurement & Testing	220303
							Research & Evaluation	220310
Educational Psychology		M		S	D		Educational Psychology	220306
Foundations of Education		M		S	D		History & Philosophy of Educ.	220304
							International/Intercultural	
							Development Education	220305
							Social Science & Education	220311
Special Education	B	M		S	D		Special Education**	220104
Mental Retardation	B	M		S	D		Mental Retardation**	220105
Education of Multiply Handicapped	B	M		S	D		- - - - -	--
Visual Disabilities	B	M		S			Visual Disabilities**	220106
Emotional Disturbances/Learning Disabilities	B	M		S	D		Emotional Disturbances/Learning Disabilities**	220107
Counseling Psychology & Human Systems					D		Counseling Psychology & Human Systems*	220505
Counseling & Human Systems		M		S			Counseling & Human Systems	220501

*Name change effective Fall, 1985

**Entrance into this major requires prior approval by school/college

ACADEMIC DEGREE PROGRAM INVENTORY, MARCH, 1985

BOR APPROVED DEGREE PROGRAM & CIP CATEGORY	APPROVED LEVELS					MAJOR	MAJOR CODE
	B	M	A	S	D P		
Adult Education		M		S	D	Adult Education	220601
Elementary Education	B	M		S	D	Elementary Education**	220101
Early Childhood Education	B	M		S	D	Early Childhood Education**	220102
Science Education	B	M		S		Science Education	220108
Secondary Education		M		S	D	- - - - -	--
Art Education	B	M		S	D	Art Education**	420711
English Education	B	M		S	D	English Education**	220202
Multilingual/Multicultural Education	B	M		S	D	Multilingual/Multicult. Educ.**	220201
Health Education	B	M				Health Education**	220503
Home Economics Education	B	M				Home Economics Education**	255610
Mathematics Education	B	M		S	D	Mathematics Education**	220205
Music Education	B	M			D	Music Education**	447250
Physical Education	B	M		S	D	Physical Education**	220403
						Administration & Professional Preparation	220404
Reading Education	B	M		S	D	Reading Education/Language Arts**	220103
Science Education					D	Methods in Secondary Science Education	220204
Social Studies Education	B	M		S	D	Social Studies Education**	220203
Comprehensive Vocational Education				S	D	Comprehensive Voc. Educ.	220603
Movement Science Education	B	M		S	D	Exercise Physiology**	220401
						Motor Learning**	220402
Science & Human Affairs Education	B	M		S	D	- - - - -	--
						Education, NFA	229999
<u>Engineering</u>							
Civil Engineering	B					Civil Engineering**	555010
Electrical Engineering	B					Electrical Eng./Systems**	551010
						Electrical Eng./Elect.**	552010
						Electrical Eng./Computer Science**	553010
Mechanical Engineering						Mechanical Engineering**	554010
Chemical Engineering						Chemical Engineering**	556010
						Engineering, Undecided	559910
						Engineering, NFA	559999
<u>Foreign Languages</u>							
Russian	B					Russian	117130
						Russian/Business	117131

**Entrance into this major requires prior approval by school/college

ACADEMIC DEGREE PROGRAM INVENTORY, MARCH, 1985

BOR APPROVED DEGREE PROGRAM & CIP CATEGORY	APPROVED LEVELS					MAJOR	MAJOR CODE
	B	M	A	S	D P		
Slavic		M				Slavic	117150
German		B M				German	117120
						German/Business	117121
Greek		B M				Greek	111920
French		B M		D		French	117110
						French/Business	117111
Italian		B				Italian	117160
						Italian/Business	117161
Latin		B M				Latin	111930
Spanish		B M		D		Spanish	117140
						Spanish/Business	117141
<u>Allied Health</u>							
Medical Technology		B				Medical Technology	111130
Rehabilitation Services		B M		S D		Rehabilitation Services**	220502
Music Therapy		B M				Music Therapy**	447260
<u>Health Sciences</u>							
Audiology & Speech Pathology		B M A		D		Audiology & Speech Path.**	418510
						Audiology & Speech Path., NFA	419999
Nursing		B				Nursing**	247310
						Nursing, NFA	249999
<u>Home Economics</u>							
Home Economics		B		D		Home Economics	250010
Food & Nutrition		B M				Dietetics	254410
						Food & Nutrition	254420
						Food Service Administration	254430
						Food & Nutrition Science	254440
Home & Family Life		B M				Home & Family Life	255310
						Consumer Economics	255311
						Family Relations	255312
						Child Development	255320
						Housing	255330
Marriage & the Family				D		Marriage & Family - Home Ec.	991100
						Marriage & Family - Sociology	991200
Clothing & Textiles		B M				Clothing & Textiles	252010
						Fashion Design	252020
						Fashion Merchandising	252030
						Textiles	252040

**Entrance into this major requires prior approval by school/college

ACADEMIC DEGREE PROGRAM INVENTORY, MARCH, 1985

BOR APPROVED DEGREE PROGRAM & CIP CATEGORY	APPROVED LEVELS					MAJOR	MAJOR CODE
	B	M	A	S	D P		
<u>Law</u>							
					P	Law	313410
						Law (Business)	313411
						Law (Economics)	313412
						Law (Government)	313413
						Law (Public Administration)	313414
						Law (Urban & Regional Planning)	313415
<u>Letters</u>							
English	B	M			D	English	114210
						Linguistics	114211
						Literature	114212
						Creative Writing	114215
						English/Business	114217
Classics	B	M				Classics	111910
						Classical Civilizations	111911
						Classics & Religion	
						Greek & Latin	111915
Comparative & World Literature	B					Comparative & World Literature	119810
<u>Liberal/General Studies</u>							
Humanities	B	M			D	Humanities	115910
<u>Library & Archival Science</u>							
Library Science		M	A		D	Library Science	236510
	B					Librarianship, Interdisciplinary	992000
<u>Life Sciences</u>							
Biological Sciences	B	M			D	Biological Sciences	111110
						Medical Science	111127
Biochemistry	B					Biochemistry	111612
<u>Mathematics</u>							
Mathematics	B	M			D	Mathematics	116810
						Mathematics, NFA	116899
Statistics	B	M			D	Statistics	119310
<u>Parks & Recreation</u>							
Leisure Services & Studies	B	M				Leisure Services & Studies	220504

**Entrance into this major requires prior approval by school/college

ACADEMIC DEGREE PROGRAM INVENTORY, MARCH, 1985

BOR APPROVED DEGREE PROGRAM & CIP CATEGORY	APPROVED LEVELS					MAJOR	MAJOR CODE
	B	M	A	S	D P		
<u>Philosophy, Religion, & Theology</u>							
Philosophy	B	M			D	Philosophy	117610
Religion	B	M				Religion Religion & Classics	118610
<u>Physical Sciences</u>							
Physics, Interdisciplinary	B					Physics - Biology	118121
						Physics - Biology-Premedicine	118122
						Physics - Health Physics	118125
						Physics - Biophysics	118127
						Physics - Management	118132
						Physics - Environmental Sciences	118142
						Physics - Oceanography	118144
						Physics - Geology	118146
						Physics - Education	118150
						Physics - Music Technology	118160
						Physics - Philosophy	118165
						Physics - Computer Science	118185
						Physics - Government	118195
Meteorology	B	M			D	Meteorology	116910
Chemistry	B	M			D	Chemistry	111610
						Analytical Chemistry	111611
						Biochemistry	111612
						Inorganic Chemistry	111613
						Nuclear Chemistry	111614
						Organic Chemistry	111615
						Physical Chemistry	111616
Chemical Physics		M			D	Chemical Physics	117810
Chemical Science	B					Chemical Science	111620
Geology	B	M			D	Geology	114710
Oceanography		M			D	Oceanography	116110
						Biological Oceanography	116111
						Chemical Oceanography	116112
						Geological Oceanography	116113
						Physical Oceanography	116114
Physics	B	M			D	Physics	118110
Geophysical Fluid Dynamics					D	Geophysical Fluid Dynamics	117510
Molecular Biophysics					D	Molecular Biophysics	117710

**Entrance into this major requires prior approval by school/college

ACADEMIC DEGREE PROGRAM INVENTORY, MARCH, 1985

BOR APPROVED DEGREE PROGRAM & CIP CATEGORY	APPROVED LEVELS					MAJOR	MAJOR CODE
	B	M	A	S	D		
<u>Psychology</u>							
Psychology	B	M			D	Psychology	118410
						General-Experimental Psychology	118411
						Clinical Psychology	118412
						School Psychology	118413
<u>Protective Services</u>							
Criminology	B	M			D	Criminology	349410
<u>Public Affairs</u>							
Public Administration		M			D	Public Administration	325110
Social Work	B	M			D	Social Work	338910
<u>Social Sciences</u>							
Social Science	B	M				Social Science	328810
Anthropology	B	M			D*	Anthropology	110510
						Archaeology	110511
Economics	B	M			D	Economics	322210
Geography	B	M			D*	Geography	324610
History	B	M			D	History	115210
International Affairs	B	M				International Affairs	329910
Political Science	B	M			D	Political Science	324910
Sociology	B	M			D	Sociology	329010
<u>Visual and Performing Arts</u>							
Dance	B	M				Dance**	422810
						Dance, NFA	429999
Craft Design	B	M				Craft Design	420630
Theatre	B	M			D	Theatre	430810
						Acting	430820
						Design/Technology	430830
						Musical Theatre - Theatre	430890
						Theatre, NFA	439999
Studio Art	B	M				Studio Art	420610
History & Criticism of Art	B	M			D	Art History	420810
Music - Liberal Arts	B					Music - Liberal Arts**	993000
Music History & Literature	B	M				Music History**	447230
						Musicology	447271

**Entrance into this major requires prior approval by school/college

ACADEMIC DEGREE PROGRAM INVENTORY, MARCH, 1985

BOR APPROVED DEGREE PROGRAM & CIP CATEGORY	APPROVED LEVELS					MAJOR	MAJOR CODE
	B	M	A	S	D P		
<u>Visual and Performing Arts (continued)</u>							
Music Performance	B	M			D	Music Performance**	447210
						Brass**	447211
						Harp**	447212
						Organ**	447213
						Percussion**	447214
						Piano**	447215
						Strings**	447216
						Voice**	447217
						Woodwinds**	447218
						Harpischord**	447219
						Choral Conducting	447280
						Wind Ensemble/Band Conducting	447281
						Accompanying	447285
						Musical Theatre** - Music	447290
						Music, Undecided**	447298
						Music, NFA	449999
Music Composition	B	M			D	Music Composition**	447220
Music Theory	B	M			D	Music Theory**	447270
Opera Production			M			Opera	447240
<u>Undecided/Undeclared</u>							
Undecided						Undecided	920001
Special Student						Special Student	920002

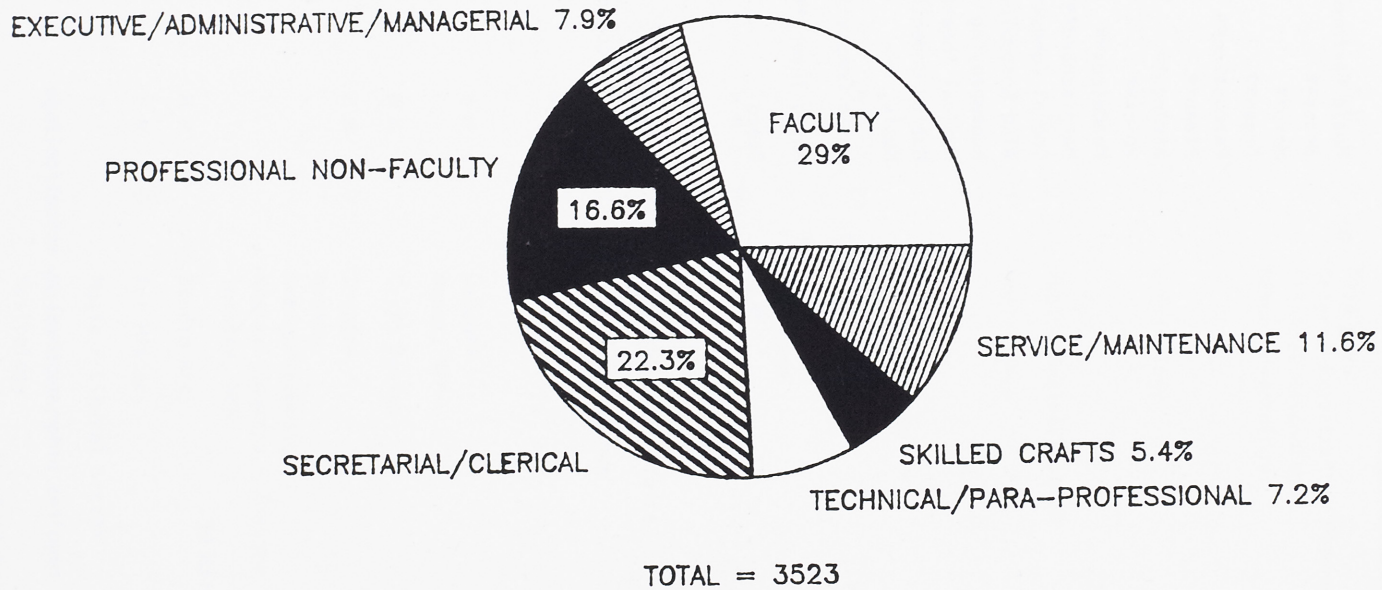
KEY:

B Bachelor
M Master
A Advanced Master
S Specialist
D Doctoral
D* Cooperative Program with UF
P Professional
N No Degree Offered
NFA Not Formally Admitted

**Entrance into this major requires prior approval by school/college

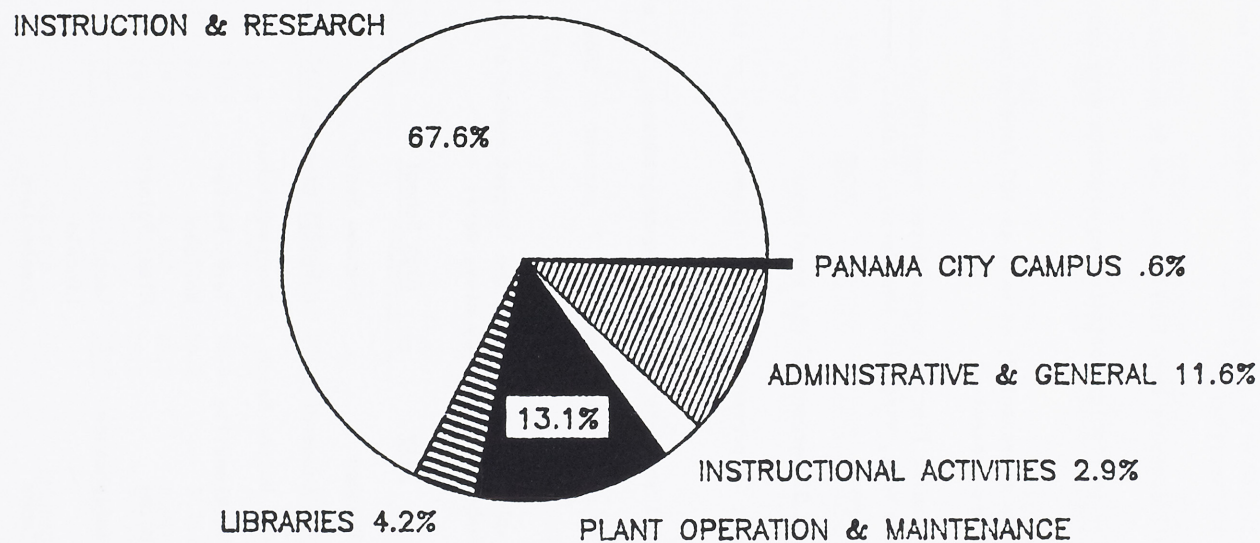
Source: Office of Budget and Analysis

FULL-TIME EMPLOYEES BY JOB CATEGORY 1984 - 85



SOURCE: EE06 Report, 11/84

E & G ALLOCATED RESOURCES 1984 — 85 BY FUNCTION



TOTAL = \$118,205,637

SOURCE: FSU 1984-85 Operating Budget

STUDENT CHARACTERISTICS, FALL 1984

- ° Enrollment was 21,320 with 75 percent undergraduates, 19 percent graduates, 6 percent unclassified
- ° 80 percent of all students were Floridians, and 96 percent were from the United States
- ° Top five counties in Florida contributing students were Leon, Dade, Broward, Duval, and Pinellas
- ° All 50 states were represented; as well as 102 foreign countries, 48 of which had 5 or more students present
- ° Nine states (excluding Florida) contributed over 100 students each (in descending order): Georgia, New York, Virginia, New Jersey, Alabama, Pennsylvania, Illinois, Ohio, and North Carolina
- ° Women constituted 51 percent of the enrollment
- ° Minorities made up 14 percent of the enrollment; half of the minority enrollment was Black.
- ° Average age of all students was 24; of undergraduates, 22; of graduates, 31
- ° Students enrolled full-time represented 77 percent of those in attendance

The 10 Florida high schools contributing the largest number of first-time-in-college freshmen in Fall 1984, in alphabetical order by city, were:

<u>City</u>	<u>High School</u>
Brandon	Brandon Senior
Ft. Lauderdale	Cardinal Gibbons
Ft. Walton Beach	Choctawhatchee
Jacksonville	Terry Parker Wolfson
Miami	Miami Palmetto
Tallahassee	Leon Lincoln
Tampa	Chamberlain
Winter Park	Winter Park

Source: Fall (Preliminary) Student Data Course File

CHARACTERISTICS OF STUDENTS

HEADCOUNT ENROLLMENT BY SEX	FALL 1980		FALL 1981		FALL 1982		FALL 1983		FALL 1984	
	%		%		%		%		%	
	NUMBER	TOTAL	NUMBER	TOTAL	NUMBER	TOTAL	NUMBER	TOTAL	NUMBER	TOTAL
Male	10,626	47.4	10,533	47.1	10,291	46.7	9,848	46.8	9,969	46.8
Female	11,798	52.6	11,830	52.9	11,729	53.3	11,217	53.2	11,351	53.2
Total	22,424		22,363		22,020		21,065		21,320	

HEADCOUNT ENROLLMENT BY RACE	FALL 1980		FALL 1981		FALL 1982		FALL 1983		FALL 1984	
	%		%		%		%		%	
	NUMBER	TOTAL	NUMBER	TOTAL	NUMBER	TOTAL	NUMBER	TOTAL	NUMBER	TOTAL
White	18,679	83.3	18,819	84.1	18,688	84.9	18,026	85.6	18,339	86.0
Black	1,929	8.6	1,736	7.8	1,531	7.0	1,421	6.7	1,498	7.0
Hispanic	393	1.7	411	1.8	411	1.9	390	1.8	562	2.6
Asian	85	.4	98	.4	94	.4	80	.4	138	.7
American Indian	22	.1	23	.1	31	.1	32	.2	34	.2
Non-Res. Alien	374	1.7	459	2.1	473	2.1	542	2.6	560	2.6
Not Reported	942	4.2	817	3.7	792	3.6	574	2.7	189	.9
Total	22,424		22,363		22,020		21,065		21,320	

HEADCOUNT ENROLLMENT BY LEVEL	FALL 1981		FALL 1982		FALL 1983		FALL 1984	
	%		%		%		%	
	NUMBER	TOTAL	NUMBER	TOTAL	NUMBER	TOTAL	NUMBER	TOTAL
Freshman	4,438	19.8	3,400	15.4	3,046	14.5	3,713	17.4
Sophomore	3,075	13.8	3,173	14.4	2,707	12.9	2,245	10.5
Junior	5,165	23.1	5,323	24.2	5,313	25.2	5,085	23.9
Senior	4,294	19.2	4,657	21.1	4,805	22.8	4,992	23.4
Graduate	4,286	19.2	4,223	19.2	4,071	19.3	4,105	19.3
Unclassified	1,105	4.9	1,244	5.7	1,123	5.3	1,180	5.5
Total	22,363		22,020		21,065		21,320	

Source: Fall (Preliminary) Student Data Course File

CHARACTERISTICS OF STUDENTS

HEADCOUNT ENROLLMENT BY AGE	FALL, 1981 PERCENTAGE			FALL, 1982 PERCENTAGE			FALL, 1983 PERCENTAGE			FALL, 1984 PERCENTAGE		
	UG	G	N	UG	G	N	UG	G	N	UG	G	N
17 and below	.5	-	.7	.4	-	.8	.3	-	.7	.5	-	1.4
18-22	81.8	8.5	16.2	79.5	8.7	12.4	78.1	7.3	14.7	77.5	7.3	10.1
23-25	10.3	24.9	16.2	11.4	24.3	15.3	12.4	24.5	13.6	12.7	22.7	14.3
26-30	4.5	29.4	23.1	5.2	27.9	23.9	5.2	28.1	22.0	5.1	27.0	21.9
31-35	1.8	18.5	21.9	1.9	19.0	19.8	2.2	19.3	19.3	2.2	19.6	20.9
36-40	.6	9.5	10.2	.9	10.4	12.2	1.0	10.7	12.9	1.1	12.0	13.1
41 and above	.5	9.2	11.7	.7	9.7	15.6	.8	10.1	16.8	.9	11.4	18.3

HEADCOUNT ENROLLMENT BY SCHOOL/COLLEGE	FALL 1981		FALL 1982		FALL 1983		FALL 1984	
	Number	%	Number	%	Number	%	Number	%
		Total		Total		Total		Total
Arts & Sciences	4,251	19.0	4,538	20.7	4,526	21.5	4,463	20.9
Business	6,055	27.1	5,625	25.6	4,738	22.5	4,740	22.2
Education	2,199	9.8	1,955	8.9	1,920	9.1	1,997	9.4
Home Economics	876	3.9	845	3.8	802	3.8	795	3.7
Library & Info. Studies	153	.7	126	.6	97	.5	112	.5
Nursing	524	2.4	511	2.3	511	2.4	498	2.3
Criminology	613	2.7	622	2.8	633	3.0	641	3.0
Law	585	2.6	614	2.8	604	2.9	595	2.8
Social Sciences	1,211	5.4	1,323	6.0	1,535	7.3	1,647	7.7
Social Work	439	2.0	447	2.0	403	1.9	419	2.0
Communication	1,111	5.0	1,119	5.1	1,048	5.0	941	4.4
Visual Arts	832	3.7	752	3.4	691	3.3	701	3.3
Theatre	341	1.5	356	1.6	346	1.6	295	1.4
Music	762	3.4	767	3.5	735	3.5	676	3.2
Interdivisional	91	.4	73	.3	70	.3	102	.5
Undecided	1,430	6.4	1,428	6.5	1,202	5.7	1,117	5.3
Special Students	890	4.0	909	4.1	935	4.4	1,150	5.4
Engineering	--	--	10	.0	269	1.3	431	2.0
Total	22,363	100.0	22,020	100.0	21,065	100.0	21,320	100.0

KEY:

- UG Undergraduate Students
- G Graduate Students
- N Unclassified Students

Source: Fall (Preliminary) Student Data Course File

ENROLLMENT HISTORY
HEADCOUNT
(FALL TERMS)

<u>Year</u>	<u>Undergraduate</u>	<u>Graduate</u>	<u>Other</u>	<u>Total</u>
1927	1398	4	9	1411
1930	1667	9	56	1732
1935	1667	8	62	1737
1940	1908	19	42	1969
1945	2392	12	43	2447
1950	4537	779	165	5481
1955	5321	817	304	6442
1960	7365	1335	319	9019
1965	10576	2177	447	13200
1970	12863	3813	316	16992
1975	15685	4171	1808	21664
1980	16653	4314	1457	22424
1981	16972	4286	1105	22363
1982	16554	4222	1244	22020
1983	15871	4071	1123	21065
1984	16035	4105	1180	21320

Source: Fall (Preliminary) Student Data Course File

HEADCOUNT BY DEPARTMENT AND SCHOOL/COLLEGE FOR FALL TERMS

	FALL 1982				FALL 1983				FALL 1984			
	UG	G	N	TOTAL	UG	G	N	TOTAL	UG	G	N	TOTAL
<u>College of Arts & Sciences</u>												
American Studies	10	2	0	12	12	1	0	13	12	2	0	14
Anthropology	43	24	2	69	41	22	0	63	38	17	0	55
Biological Science	866	103	2	971	796	112	1	909	794	98	1	893
Chemistry	189	84	0	273	138	86	0	224	153	82	0	235
Asian Studies	3	1	0	4	2	1	0	3	7	2	0	9
Classical Languages, Literature and Civilization	12	6	0	18	9	7	0	16	9	8	0	17
English	325	82	1	408	302	87	2	391	339	82	0	421
Geology	117	54	1	172	93	51	1	145	73	51	0	124
History	120	44	0	164	122	43	0	165	148	41	0	189
Humanities	49	64	0	113	50	55	2	107	44	52	0	96
Oceanography	0	39	0	39	0	42	0	42	0	43	0	43
Computer Science	-	-	-	-	-	-	-	-	56	2	0	58
Mathematics	958	68	2	1055	1145	75	0	1220	920	71	0	991
Meteorology	101	32	0	133	97	35	1	133	96	38	0	134
Modern Languages	85	33	0	118	90	34	2	126	93	38	0	131
Geophysical Fluid Dynamics	0	3	0	3	0	4	0	4	0	4	0	4
Philosophy	18	16	0	34	17	17	0	34	19	21	1	41
Molecular Biophysics	0	8	0	8	0	9	0	9	0	12	0	12
Inter-American Studies	5	0	0	5	4	0	0	4	4	0	0	4
Physics	131	51	0	182	98	49	0	147	84	51	1	136
Psychology	574	124	0	698	569	131	0	700	642	137	0	779
Religion	16	13	0	29	18	11	2	31	18	13	0	31
Statistics	9	21	0	30	14	26	0	40	21	25	0	46
Comparative & World Literature	0	0	0	0	0	0	0	0	0	0	0	0
<u>Arts & Sciences</u>												
Totals	3657	873	8	4538	3617	898	11	4526	3570	890	3	4463
<u>College of Business</u>												
Accounting	765	36	1	802	565	26	2	593	506	52	0	558
Business Administration	548	54	3	605	257	53	1	311	154	59	2	215
Finance	426	46	2	474	382	41	0	423	421	48	1	470
Hospitality Administration	334	0	0	334	313	0	0	313	288	0	0	288
Risk and Insurance	134	2	0	136	121	0	0	121	110	1	0	111
Management	644	49	5	698	717	39	3	759	631	39	0	670
Marketing	530	13	1	544	425	11	1	437	436	21	0	457
Multi-National Business Operations	66	0	0	66	71	0	0	71	66	0	0	66

KEY:

UG Undergraduate Students
 G Graduate Students
 N Unclassified Students
 NFA Not Formally Admitted

HEADCOUNT BY DEPARTMENT AND SCHOOL/COLLEGE FOR FALL TERMS

	FALL 1982				FALL 1983				FALL 1984			
	UG	G	N	TOTAL	UG	G	N	TOTAL	UG	G	N	TOTAL
Pre-Law	0	0	0	0	0	0	0	0	0	0	0	0
Business, NFA	1956	10	0	1966	1710	0	0	1710	1905	0	0	1905
Business Totals	5403	210	12	5625	4561	170	7	4738	4517	220	3	4740
<u>College of Education</u>												
Childhood, Reading, & Special Education	329	154	1	484	353	165	0	518	432	192	0	624
Curriculum & Instruction	68	89	1	158	85	107	0	192	95	131	0	226
Educational Research, Development, & Foundations	0	144	0	144	0	135	0	135	0	132	1	133
Movement Science & Physical Education	175	55	0	230	173	44	0	217	151	70	0	221
Human Services & Studies	151	134	0	285	137	138	1	276	127	174	0	301
Educational Leadership	0	354	0	354	0	336	1	337	0	242	0	242
Education, NFA	289	10	1	300	245	0	0	245	250	0	0	250
Education Totals	1012	940	3	1955	993	925	2	1920	1055	941	1	1997
<u>College of Home Economics</u>												
General Home Economics	35	0	0	35	17	0	0	17	12	1	0	13
Clothing & Textiles	422	14	1	437	429	12	0	441	465	18	0	483
Nutrition & Food Science	129	36	0	165	124	36	0	160	116	36	0	152
Home & Family Life	110	37	0	147	89	34	1	124	87	24	1	112
Home Economics Education	39	22	0	61	36	22	2	60	23	12	0	35
Home Economics Totals	735	109	1	845	695	104	3	802	703	91	1	795
<u>School of Library & Information Studies</u>												
	0	125	1	126	0	96	1	97	0	112	0	112
<u>School of Nursing</u>												
Nursing	361	0	2	363	212	0	0	212	272	0	0	272
Nursing, NFA	148	0	0	148	299	0	0	299	226	0	0	226
School of Nursing Totals	509	0	2	511	511	0	0	511	498	0	0	498
<u>School of Criminology</u>												
	559	63	0	622	575	58	0	633	581	60	0	641
<u>College of Law</u>												
	0	614	0	614	0	604	0	604	0	595	0	595

KEY:

UG Undergraduate Students
 G Graduate Students
 N Unclassified Students
 NFA Not Formally Admitted

HEADCOUNT BY DEPARTMENT AND SCHOOL/COLLEGE FOR FALL TERMS

	FALL 1982				FALL 1983				FALL 1984			
	UG	G	N	TOTAL	UG	G	N	TOTAL	UG	G	N	TOTAL
<u>College of Social Sciences</u>												
Political Science	431	75	1	507	499	58	1	558	499	36	4	539
Economics	156	67	2	225	313	60	0	373	383	49	0	432
Geography	34	18	0	52	40	12	2	54	41	15	0	56
International Affairs	126	38	1	165	135	29	0	164	169	35	0	204
Social Science	68	7	0	75	85	8	0	93	109	6	0	115
Sociology	87	37	0	124	91	36	0	127	90	31	0	121
Urban & Regional Planning	0	69	3	72	1	61	0	62	1	65	3	69
Public Administration	0	101	2	103	0	103	1	104	0	106	5	111
Social Sciences Totals	902	412	9	1323	1164	367	4	1535	1292	343	12	1647
<u>School of Social Work</u>												
	167	277	3	447	143	256	4	403	141	275	3	419
<u>College of Communication</u>												
Communication	383	66	0	449	359	69	1	429	297	57	2	356
Audiology & Speech Pathology	90	68	0	158	105	64	0	169	90	65	1	156
Communication, NFA	512	0	0	512	450	0	0	450	429	0	0	429
Communication Totals	985	134	0	1119	914	133	1	1048	816	122	3	941
<u>School of Music</u>												
Music	493	252	1	746	441	272	1	714	366	266	0	632
Music, NFA	21	0	0	21	21	0	0	21	44	0	0	44
Music Totals	514	252	1	767	462	272	1	735	410	266	0	676
<u>School of Theatre</u>												
Theatre	280	72	4	356	291	55	0	346	180	47	1	228
Theatre, NFA	0	0	0	0	0	0	0	0	67	0	0	67
Theatre Totals	280	72	4	356	291	55	0	346	247	47	1	295
<u>School of Visual Arts</u>												
Art	276	33	0	309	251	32	0	283	249	26	2	277
Dance	38	4	0	42	32	6	0	38	37	4	0	41
Dance, NFA	14	0	0	14	17	0	0	17	26	0	0	26
Interior Design	275	34	0	309	267	29	0	296	253	28	0	281
Art Education	35	12	0	47	17	15	0	32	16	16	0	32
Art History	17	14	0	31	15	10	0	25	17	27	0	44
Visual Arts Totals	655	97	0	752	599	92	0	691	598	101	2	701

KEY:

UG Undergraduate Students
 G Graduate Students
 N Unclassified Students
 NFA Not Formally Admitted

HEADCOUNT BY DEPARTMENT AND SCHOOL/COLLEGE FOR FALL TERMS

	FALL 1982				FALL 1983				FALL 1984			
	UG	G	N	TOTAL	UG	G	N	TOTAL	UG	G	N	TOTAL
<u>School of Engineering</u>												
Electrical Eng./Systems	0	0	0	0	11	0	0	11	27	0	0	27
Electrical Eng./Elect.	0	0	0	0	0	0	0	0	63	0	0	63
Electrical Eng./Comp. Sci	0	0	0	0	0	0	0	0	85	0	0	85
Mechanical Engineering	0	0	0	0	0	0	0	0	44	0	0	44
Civil Engineering	0	0	0	0	0	0	0	0	36	0	0	36
Chemical Engineering	0	0	0	0	0	0	0	0	20	0	0	20
Engineering, NFA	0	0	0	0	0	0	0	0	156	0	0	156
Engineering Totals*	10	0	0	10	269	0	0	269	431	0	0	431
<u>Interdivisional</u>												
Programs	36	37	0	73	28	41	1	70	59	42	1	102
<u>Undecided</u>	1128	9	291	1428	1049	0	153	1202	1117	0	0	1117
<u>Special</u>	0	0	909	909	0	0	935	935	0	0	1150	1150
UNIVERSITY TOTALS	16553	4223	1244	22020	15871	4071	1123	21065	16035	4105	1180	21320

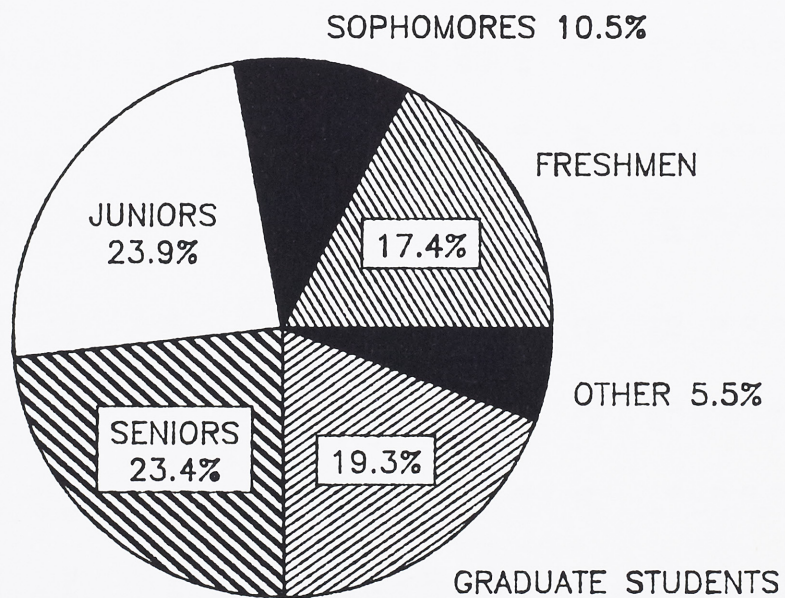
KEY:

UG Undergraduate Students
 G Graduate Students
 N Unclassified Students
 NFA Not Formally Admitted

*Prior to Fall 1984, only total headcount was reported for Engineering.

Source: Fall (Preliminary) Student Data Course File

STUDENT ENROLLMENT HEADCOUNT BY LEVEL FALL 1984



TOTAL HEADCOUNT = 21,320

SOURCE: Fall (Prelim) Student Data Course File

STUDENT CREDIT HOUR ENROLLMENT BY SCHOOL AND COLLEGE
ANNUAL FTE

	<u>1980-81*</u>	<u>1981-82</u>	<u>1982-83</u>	<u>1983-84</u>
COLLEGE OF ARTS AND SCIENCES				
Anthropology				
Lower	66.5	63.7	55.2	42.9
Upper	50.3	42.4	28.5	29.8
Graduate	<u>13.8</u>	<u>11.8</u>	<u>11.5</u>	<u>10.0</u>
Total	130.6	117.9	95.2	82.7
Biological Science				
Lower	223.4	279.8	251.2	221.0
Upper	151.2	165.5	153.2	160.7
Graduate	<u>93.4</u>	<u>103.4</u>	<u>96.8</u>	<u>104.8</u>
Total	468.0	548.7	501.2	486.5
Chemistry				
Lower	258.8	234.9	195.9	161.2
Upper	76.1	84.5	77.6	85.7
Graduate	<u>82.4</u>	<u>82.6</u>	<u>74.3</u>	<u>72.8</u>
Total	417.3	402.0	347.8	319.7
Classical Languages, Literature, and Civilization:				
Classics				
Lower	12.9	31.5	36.1	32.3
Upper	77.0	80.6	74.5	67.3
Graduate	<u>7.6</u>	<u>4.3</u>	<u>4.4</u>	<u>5.0</u>
Total	97.5	116.4	115.0	104.6
Greek				
Lower	4.1	2.1	1.6	2.7
Upper	.8	.8	.4	.5
Graduate	<u>.9</u>	<u>.5</u>	<u>.6</u>	<u>.3</u>
Total	5.8	3.4	2.6	3.5
Latin				
Lower	11.0	13.3	11.1	9.5
Upper	2.0	2.4	1.3	1.3
Graduate	<u>1.1</u>	<u>.7</u>	<u>.7</u>	<u>1.1</u>
Total	14.1	16.4	13.1	11.9
Classical Languages, Literature, and Civilization Totals				
Lower	28.0	46.9	48.8	44.5
Upper	79.8	83.8	76.2	69.1
Graduate	<u>9.5</u>	<u>5.5</u>	<u>5.7</u>	<u>6.4</u>
Total	117.3	136.2	130.7	120.0

*See final page of Student Credit Hour Enrollment

**Includes Classical Civilizations and Literature.

STUDENT CREDIT HOUR ENROLLMENT BY SCHOOL AND COLLEGE
ANNUAL FTE

	<u>1980-81*</u>	<u>1981-82</u>	<u>1982-83</u>	<u>1983-84</u>
English				
Lower	492.1	544.0	472.2	486.6
Upper	167.1	141.3	164.2	160.5
Graduate	<u>65.1</u>	<u>54.8</u>	<u>52.8</u>	<u>63.8</u>
Total	724.3	740.1	689.2	710.9
Geology				
Lower	102.4	121.6	113.6	96.1
Upper	25.8	26.8	27.1	27.4
Graduate	<u>20.8</u>	<u>22.9</u>	<u>24.4</u>	<u>24.6</u>
Total	149.0	171.3	165.1	148.1
History				
Lower	554.3	559.5	429.0	395.9
Upper	137.7	124.3	113.5	113.5
Graduate	<u>38.6</u>	<u>36.6</u>	<u>36.5</u>	<u>37.2</u>
Total	730.6	720.4	579.0	546.6
Humanities				
Lower	192.2	192.0	184.1	149.3
Upper	11.4	17.7	21.4	21.8
Graduate	<u>18.4</u>	<u>16.5</u>	<u>20.6</u>	<u>17.2</u>
Total	222.0	226.2	226.1	188.3
Mathematics and Computer Science				
Lower	520.5	499.2	503.4	650.5
Upper	310.1	415.0	536.1	475.2
Graduate	<u>41.1</u>	<u>38.3</u>	<u>48.3</u>	<u>49.4</u>
Total	871.7	952.5	1087.8	1175.2
Meteorology				
Lower	88.4	93.5	85.1	72.7
Upper	14.4	17.1	19.7	15.5
Graduate	<u>16.8</u>	<u>23.2</u>	<u>24.6</u>	<u>23.7</u>
Total	119.6	133.8	129.4	111.9
Modern Languages:				
Chinese				
Lower	3.8	3.1	3.9	3.3
Upper	.6	.8	.6	1.0
Graduate	<u>.1</u>	<u>.2</u>	<u>.2</u>	<u>.1</u>
Total	4.5	4.1	4.7	4.4
French				
Lower	141.0	139.5	136.5	130.2
Upper	10.7	18.8	14.3	14.1
Graduate	<u>11.3</u>	<u>9.2</u>	<u>8.2</u>	<u>8.3</u>
Total	163.0	167.5	159.0	152.6

STUDENT CREDIT HOUR ENROLLMENT BY SCHOOL AND COLLEGE
ANNUAL FTE

	1980-81*	1981-82	1982-83	1983-84
German				
Upper	72.7	60.2	56.5	66.9
Lower	11.0	8.8	8.8	6.8
Graduate	<u>8.8</u>	<u>8.0</u>	<u>5.4</u>	<u>8.3</u>
Total	92.5	77.0	70.7	82.0
Italian				
Lower	39.3	31.1	26.3	30.5
Upper	4.9	5.9	3.6	5.2
Graduate	<u>1.7</u>	<u>1.9</u>	<u>1.9</u>	<u>2.2</u>
Total	45.9	38.9	31.8	37.9
Japanese				
Lower	3.0	3.0	3.3	3.1
Upper	.4	.2	.2	.3
Graduate	<u>.1</u>	<u>.3</u>	<u>.2</u>	<u>.4</u>
Total	3.5	3.5	3.7	3.8
Modern Languages				
Lower	.9	3.1	1.5	0
Upper	7.1	12.6	16.5	6.2
Graduate	<u>1.8</u>	<u>2.0</u>	<u>1.3</u>	<u>1.6</u>
Total	9.8	17.7	19.3	7.8
Portuguese				
Lower	0	0	0	0
Upper	1.3	2.0	1.1	1.3
Graduate	<u>.2</u>	<u>.8</u>	<u>.1</u>	<u>.2</u>
Total	1.5	2.8	1.2	1.5
Russian				
Lower	12.2	12.3	11.7	10.5
Upper	3.3	3.5	3.2	3.9
Graduate	<u>1.0</u>	<u>.6</u>	<u>1.6</u>	<u>2.6</u>
Total	16.5	16.4	16.5	17.0
Serbo-Croatian				
Lower	.9	0	0	0
Upper	.1	.1	.1	.2
Graduate	<u>0</u>	<u>.1</u>	<u>0</u>	<u>.2</u>
Total	1.0	.2	.1	.4
Slavic				
Lower	0	0	0	0
Upper	.5	0	.3	.2
Graduate	<u>.4</u>	<u>.1</u>	<u>.3</u>	<u>0</u>
Total	.9	.1	.6	.2
Spanish				
Lower	214.4	199.6	196.6	197.0
Upper	23.6	23.8	27.4	22.3
Graduate	<u>10.6</u>	<u>9.1</u>	<u>7.2</u>	<u>8.5</u>
Total	248.6	232.5	231.2	227.8

STUDENT CREDIT HOUR ENROLLMENT BY SCHOOL AND COLLEGE
ANNUAL FTE

	<u>1980-81*</u>	<u>1981-82</u>	<u>1982-83</u>	<u>1983-84</u>
Linguistics				
Lower	0	0	0	0
Upper	0	0	0	0
Graduate	<u>0</u>	<u>0</u>	<u>0</u>	<u>0</u>
Total	0	0	0	0
Modern Language Totals				
Lower	488.2	451.9	436.3	441.5
Upper	63.4	76.5	76.1	61.5
Graduate	<u>36.0</u>	<u>32.3</u>	<u>26.1</u>	<u>32.4</u>
Total	587.6	560.7	538.5	535.4
Oceanography				
Lower	29.5	32.6	23.0	18.5
Upper	1.3	1.3	1.5	.8
Graduate	<u>33.3</u>	<u>29.8</u>	<u>25.9</u>	<u>29.3</u>
Total	64.1	63.7	50.4	48.6
Philosophy				
Lower	42.3	64.8	86.9	75.8
Upper	21.3	16.4	19.9	17.6
Graduate	<u>14.4</u>	<u>15.9</u>	<u>9.8</u>	<u>12.4</u>
Total	78.0	97.1	116.6	105.8
Physics				
Lower	145.4	165.9	149.3	132.8
Upper	46.6	52.3	58.5	54.2
Graduate	<u>33.5</u>	<u>37.4</u>	<u>45.3</u>	<u>47.8</u>
Total	225.5	255.6	253.1	234.8
Psychology				
Lower	194.1	251.5	206.3	197.2
Upper	333.5	335.4	318.5	305.8
Graduate	<u>95.6</u>	<u>93.1</u>	<u>99.3</u>	<u>108.2</u>
Total	623.2	680.0	624.1	611.2
Religion				
Lower	100.8	118.8	144.6	129.5
Upper	46.7	47.3	29.5	27.2
Graduate	<u>8.1</u>	<u>7.8</u>	<u>9.7</u>	<u>7.8</u>
Total	155.6	173.9	183.8	164.5
Statistics				
Lower	0	0	0	4.7
Upper	141.9	137.7	139.0	144.4
Graduate	<u>55.5</u>	<u>43.0</u>	<u>41.9</u>	<u>38.7</u>
Total	197.4	180.7	180.9	187.8
Geophysical Fluid Dynamics				
Lower	0	0	0	0
Upper	0	0	0	0
Graduate	<u>1.8</u>	<u>.8</u>	<u>1.1</u>	<u>2.3</u>
Total	1.8	.8	1.1	2.3

STUDENT CREDIT HOUR ENROLLMENT BY SCHOOL AND COLLEGE
ANNUAL FTE

	<u>1980-81*</u>	<u>1981-82</u>	<u>1982-83</u>	<u>1983-84</u>
Molecular Biophysics				
Lower	0	0	0	0
Upper	0	0	0	0
Graduate	<u>5.0</u>	<u>5.7</u>	<u>4.2</u>	<u>3.4</u>
Total	5.0	5.7	4.2	3.4
American Studies				
Lower	2.5	7.1	5.5	5.1
Upper	11.9	12.0	8.2	8.3
Graduate	<u>.9</u>	<u>1.7</u>	<u>1.8</u>	<u>1.8</u>
Total	15.3	20.8	15.5	15.2
Asian Studies				
Lower	0	0	0	0
Upper	.3	0	.2	.2
Graduate	<u>0</u>	<u>.2</u>	<u>.2</u>	<u>.1</u>
Total	.3	.2	.4	.3
Honors				
Lower	0	9.2	11.3	8.6
Upper	.3	0	0	0
Graduate	<u>0</u>	<u>0</u>	<u>0</u>	<u>0</u>
Total	.3	9.2	11.3	8.6
Comparative & World Literature				
Lower	0	0	0	0
Upper	.1	0	0	0
Graduate	<u>0</u>	<u>0</u>	<u>0</u>	<u>0</u>
Total	.1	0	0	0
College of Arts and Sciences Totals				
Lower	3536.2	3736.9	3401.7	3334.5
Upper	1690.9	1797.3	1868.9	1779.2
Graduate	<u>684.0</u>	<u>663.3</u>	<u>660.8</u>	<u>694.1</u>
Total	5911.1	6197.5	5931.4	5807.8
COLLEGE OF BUSINESS				
Accounting				
Lower	222.3	240.7	239.8	209.0
Upper	404.5	313.7	304.4	236.4
Graduate	<u>0</u>	<u>0</u>	<u>0</u>	<u>.2</u>
Total	626.8	554.4	544.2	445.6
Business Administration**				
Lower	0	0	0	0
Upper	138.0	152.1	147.4	125.9
Graduate	<u>235.5</u>	<u>167.6</u>	<u>143.9</u>	<u>121.0</u>
Total	373.5	319.7	291.3	246.9

**Includes Business Law

STUDENT CREDIT HOUR ENROLLMENT BY SCHOOL AND COLLEGE
ANNUAL FTE

	<u>1980-81*</u>	<u>1981-82</u>	<u>1982-83</u>	<u>1983-84</u>
Finance				
Lower	0	0	0	0
Upper	385.9	415.8	461.7	451.2
Graduate	<u>0</u>	<u>0</u>	<u>0</u>	<u>0</u>
Total	385.9	415.8	461.7	451.2
Hospitality				
Administration				
Lower	0	0	0	0
Upper	122.6	117.1	125.4	115.4
Graduate	<u>0</u>	<u>0</u>	<u>0</u>	<u>0</u>
Total	122.6	117.1	125.4	115.4
Risk and Insurance				
Lower	0	0	0	0
Upper	208.7	215.8	203.1	194.2
Graduate	<u>0</u>	<u>0</u>	<u>0</u>	<u>1.4</u>
Total	208.7	215.8	203.1	195.6
Management				
Lower	0	0	0	0
Upper	336.4	361.2	404.3	460.7
Graduate	<u>0</u>	<u>0</u>	<u>0</u>	<u>0</u>
Total	336.4	361.2	404.3	460.7
Marketing				
Lower	0	0	0	0
Upper	318.6	292.4	276.5	279.4
Graduate	<u>0</u>	<u>0</u>	<u>0</u>	<u>0</u>
Total	318.6	292.4	276.5	279.4
Multi-National				
Business Operations				
Lower	0	0	0	0
Upper	24.3	20.6	18.7	21.5
Graduate	<u>0</u>	<u>0</u>	<u>0</u>	<u>0</u>
Total	24.3	20.6	18.7	21.5
College of Business Totals				
Lower	222.3	240.7	239.8	209.0
Upper	1939.0	1888.7	1941.5	1884.7
Graduate	<u>235.5</u>	<u>167.6</u>	<u>143.9</u>	<u>122.6</u>
Total	2396.8	2297.0	2325.2	2216.3
COLLEGE OF EDUCATION				
Curriculum and Instruction				
Lower	.2	0	0	0
Upper	82.2	77.8	64.1	88.8
Graduate	<u>60.0</u>	<u>58.4</u>	<u>54.5</u>	<u>58.8</u>
Total	142.4	136.2	118.6	147.6

STUDENT CREDIT HOUR ENROLLMENT BY SCHOOL AND COLLEGE
ANNUAL FTE

	<u>1980-81*</u>	<u>1981-82</u>	<u>1982-83</u>	<u>1983-84</u>
Educational Research, Development, and Foundations				
Lower	0	0	0	0
Upper	107.9	88.4	77.6	86.9
Graduate	<u>171.4</u>	<u>147.1</u>	<u>145.9</u>	<u>147.0</u>
Total	279.3	235.5	223.5	233.9
Childhood, Reading, and Special Education				
Lower	0	0	0	0
Upper	293.8	276.7	227.1	252.2
Graduate	<u>109.8</u>	<u>100.9</u>	<u>108.1</u>	<u>120.6</u>
Total	403.6	377.6	335.2	372.8
Movement Science and Physical Education				
Lower	32.6	21.7	20.6	23.2
Upper	142.8	123.1	112.3	118.2
Graduate	<u>37.7</u>	<u>30.8</u>	<u>27.9</u>	<u>26.1</u>
Total	213.1	175.6	160.8	167.5
Human Services and Studies				
Lower	0	3.8	4.3	4.0
Upper	188.9	175.5	172.9	163.2
Graduate	<u>89.5</u>	<u>104.2</u>	<u>97.9</u>	<u>97.9</u>
Total	278.4	283.5	275.1	265.1
Educational Leadership				
Lower	0	0	0	0
Upper	5.0	2.0	4.9	1.9
Graduate	<u>233.0</u>	<u>203.4</u>	<u>180.2</u>	<u>197.7</u>
Total	238.0	205.4	185.1	199.6
College of Education Totals				
Lower	32.8	25.5	24.9	27.2
Upper	820.6	743.5	658.9	711.2
Graduate	<u>701.4</u>	<u>644.8</u>	<u>614.5</u>	<u>648.1</u>
Total	1554.8	1413.8	1298.3	1386.5
COLLEGE OF HOME ECONOMICS				
Clothing and Textiles				
Lower	51.0	54.2	55.0	56.8
Upper	112.4	128.5	118.9	129.4
Graduate	<u>3.5</u>	<u>3.9</u>	<u>4.7</u>	<u>5.9</u>
Total	166.9	186.6	178.6	192.1
Nutrition & Food Science				
Lower	46.5	95.4	128.3	111.0
Upper	56.3	41.6	33.9	34.6
Graduate	<u>11.7</u>	<u>10.1</u>	<u>13.5</u>	<u>10.9</u>
Total	114.5	147.1	175.7	156.5

STUDENT CREDIT HOUR ENROLLMENT BY SCHOOL AND COLLEGE
ANNUAL FTE

	<u>1980-81*</u>	<u>1981-82</u>	<u>1982-83</u>	<u>1983-84</u>
Home and Family Life				
Lower	0	50.3	59.1	79.9
Upper	139.4	119.8	110.7	116.0
Graduate	<u>33.5</u>	<u>35.4</u>	<u>31.0</u>	<u>34.5</u>
Total	172.9	205.5	200.8	230.4
Home Economics Education				
Lower	0	0	0	0
Upper	30.4	31.3	31.8	33.8
Graduate	<u>15.7</u>	<u>13.3</u>	<u>12.0</u>	<u>15.5</u>
Total	46.1	44.6	43.8	49.3
College of Home Economics Totals				
Lower	97.5	199.9	242.4	247.7
Upper	338.5	321.2	295.3	313.8
Graduate	<u>64.4</u>	<u>62.7</u>	<u>61.2</u>	<u>66.8</u>
Total	500.4	583.8	598.9	628.3
SCHOOL OF LIBRARY & INFORMATION STUDIES				
Lower	2.6	3.3	3.6	2.3
Upper	22.3	18.5	15.9	8.9
Graduate	<u>124.0</u>	<u>106.7</u>	<u>82.2</u>	<u>78.9</u>
Total	148.9	128.5	101.7	90.1
SCHOOL OF NURSING				
Lower	0	0	0	0
Upper	197.2	237.2	196.6	198.4
Graduate	<u>0</u>	<u>0</u>	<u>0</u>	<u>0</u>
Total	197.2	237.2	196.6	198.4
SCHOOL OF CRIMINOLOGY				
Lower	9.4	12.2	19.9	18.5
Upper	299.8	277.0	343.6	368.3
Graduate	<u>47.2</u>	<u>34.1</u>	<u>31.8</u>	<u>33.7</u>
Total	356.4	323.3	395.3	420.5
COLLEGE OF LAW				
Lower	0	0	0	0
Upper	0	0	0	0
Graduate	<u>511.0</u>	<u>540.0</u>	<u>568.8</u>	<u>583.8</u>
Total	511.0	540.0	568.8	583.8
COLLEGE OF SOCIAL SCIENCES				
Economics				
Lower	307.1	321.8	306.5	286.2
Upper	69.7	80.9	86.1	124.8
Graduate	<u>34.3</u>	<u>44.0</u>	<u>38.1</u>	<u>39.4</u>
Total	411.1	446.7	430.7	450.4

STUDENT CREDIT HOUR ENROLLMENT BY SCHOOL AND COLLEGE
ANNUAL FTE

	<u>1980-81*</u>	<u>1981-82</u>	<u>1982-83</u>	<u>1983-84</u>
Geography				
Lower	85.9	97.5	72.3	73.3
Upper	48.0	45.4	46.9	55.5
Graduate	<u>12.5</u>	<u>7.6</u>	<u>9.2</u>	<u>9.7</u>
Total	146.4	150.5	128.4	138.5
Political Science				
Lower	86.5	98.5	81.5	71.9
Upper	170.5	198.4	214.4	243.2
Graduate	<u>36.9</u>	<u>38.1</u>	<u>38.2</u>	<u>36.2</u>
Total	293.9	335.0	334.1	351.3
International Affairs				
Lower	0	0	0	0
Upper	.4	.3	.1	.2
Graduate	<u>3.0</u>	<u>3.7</u>	<u>4.4</u>	<u>2.9</u>
Total	3.4	4.0	4.5	3.1
Social Sciences				
Lower	0	0	0	0
Upper	.2	0	.4	.5
Graduate	<u>.4</u>	<u>.3</u>	<u>.2</u>	<u>.2</u>
Total	.6	.3	.6	.7
Sociology				
Lower	140.3	171.7	147.5	169.0
Upper	108.5	82.0	85.4	71.8
Graduate	<u>27.9</u>	<u>33.9</u>	<u>29.5</u>	<u>36.3</u>
Total	276.7	287.6	262.4	277.1
Urban and Regional Planning				
Lower	0	0	0	0
Upper	7.7	11.0	12.4	12.2
Graduate	<u>33.5</u>	<u>35.6</u>	<u>49.4</u>	<u>47.1</u>
Total	41.2	46.6	61.8	59.3
Public Administration				
Lower	0	0	0	0
Upper	31.0	41.5	37.2	33.4
Graduate	<u>93.5</u>	<u>82.6</u>	<u>76.9</u>	<u>72.0</u>
Total	124.5	124.1	114.1	105.4
Black Studies				
Lower	0	0	0	0
Upper	2.1	2.6	2.4	.1
Graduate	<u>0</u>	<u>0</u>	<u>0</u>	<u>0</u>
Total	2.1	2.6	2.4	.1
College of Social Sciences Totals				
Lower	619.8	689.5	607.8	600.5
Upper	438.1	462.1	485.3	541.7
Graduate	<u>242.0</u>	<u>245.8</u>	<u>245.9</u>	<u>243.8</u>
Total	1299.9	1397.4	1339.0	1385.9

STUDENT CREDIT HOUR ENROLLMENT BY SCHOOL AND COLLEGE
ANNUAL FTE

	<u>1980-81*</u>	<u>1981-82</u>	<u>1982-83</u>	<u>1983-84</u>
SCHOOL OF SOCIAL WORK				
Lower	2.9	4.5	4.2	4.6
Upper	136.7	119.1	136.8	110.3
Graduate	<u>203.4</u>	<u>226.0</u>	<u>242.7</u>	<u>240.2</u>
Total	343.0	349.6	383.7	355.1
COLLEGE OF COMMUNICATION				
Audiology and Speech Pathology				
Lower	5.3	.2	0	0
Upper	61.5	61.7	67.7	65.6
Graduate	<u>54.4</u>	<u>42.7</u>	<u>53.6</u>	<u>49.5</u>
Total	121.2	104.6	121.3	115.1
Communication				
Lower	39.5	40.1	40.2	41.9
Upper	354.4	327.1	356.0	339.7
Graduate	<u>35.5</u>	<u>32.9</u>	<u>39.9</u>	<u>40.3</u>
Total	429.4	400.1	436.1	421.9
College of Communication Totals				
Lower	44.8	40.3	40.2	41.9
Upper	415.9	388.8	423.7	405.3
Graduate	<u>89.9</u>	<u>75.6</u>	<u>93.5</u>	<u>89.8</u>
Total	550.6	504.7	557.4	537.0
SCHOOL OF MUSIC				
Lower	235.5	253.5	271.7	217.4
Upper	168.3	138.8	139.9	148.2
Graduate	<u>142.9</u>	<u>157.7</u>	<u>169.5</u>	<u>192.3</u>
Total	546.7	550.0	581.1	557.9
SCHOOL OF THEATRE				
Lower	28.2	32.3	33.6	137.6
Upper	227.3	231.8	279.2	225.1
Graduate	<u>61.4</u>	<u>57.0</u>	<u>51.8</u>	<u>42.1</u>
Total	316.9	321.1	364.6	404.8
SCHOOL OF VISUAL ARTS				
Art				
Lower	45.9	43.4	44.4	46.5
Upper	172.5	113.6	110.3	110.4
Graduate	<u>40.9</u>	<u>31.8</u>	<u>26.6</u>	<u>21.7</u>
Total	259.3	188.8	181.3	178.6
Interior Design				
Lower	0	0	0	0
Upper	139.9	136.4	140.8	145.3
Graduate	<u>18.6</u>	<u>25.7</u>	<u>23.9</u>	<u>20.6</u>
Total	158.5	162.1	164.7	165.9

STUDENT CREDIT HOUR ENROLLMENT BY SCHOOL AND COLLEGE
ANNUAL FTE

	<u>1980-81*</u>	<u>1981-82</u>	<u>1982-83</u>	<u>1983-84</u>
Dance				
Lower	61.2	45.7	36.9	37.6
Upper	23.2	20.0	14.4	17.1
Graduate	<u>15.9</u>	<u>5.4</u>	<u>4.2</u>	<u>4.3</u>
Total	100.3	71.1	55.5	59.0
Art Education				
Lower	0	0	0	0
Upper	35.4	24.1	20.9	23.2
Graduate	<u>10.6</u>	<u>6.3</u>	<u>6.0</u>	<u>9.7</u>
Total	46.0	30.4	26.9	32.9
Art History				
Lower	0	0	0	0
Upper	0	59.2	57.4	57.2
Graduate	<u>0</u>	<u>12.6</u>	<u>12.9</u>	<u>11.4</u>
Total	0	71.8	70.3	68.6
School of Visual Arts Totals				
Lower	107.1	89.1	81.3	84.1
Upper	371.0	353.3	343.8	353.2
Graduate	<u>86.0</u>	<u>81.8</u>	<u>73.6</u>	<u>67.7</u>
Total	564.1	524.2	498.7	505.0
Slavic & East European Studies				
Lower	0	0	0	0
Upper	.1	0	0	.1
Graduate	<u>3.8</u>	<u>3.0</u>	<u>2.7</u>	<u>3.6</u>
Total	3.9	3.0	2.7	3.7
Institute of Engineering**				
Lower	0	0	0	6.7
Upper	0	0	5.4	19.2
Graduate	<u>0</u>	<u>0</u>	<u>0</u>	<u>0</u>
Total	0	0	5.4	25.9
UNIVERSITY TOTALS				
Lower	4939.1	5327.7	4971.1	4931.9
Upper	7064.5	6977.3	7134.8	7067.6
Graduate	<u>3196.3</u>	<u>3066.1</u>	<u>3042.9</u>	<u>3107.5</u>
Total	15199.9	15371.1	15148.8	15107.0

* 1980-81 quarter hours were converted to semester hours by using a factor of .667. Total semester hours were then converted to FTE's by using a factor of 40 for lower and upper level hours and a factor of 32 for graduate hours.

**Engineering generated its first student credit hour enrollment in 1982-83.

Source: Final Student Data Course File, 1980-1984.

ORGANIZATIONAL STRUCTURE & CURRENT INCUMBENT

PRESIDENT--Bernard F. Sliger

EXECUTIVE ASSISTANT TO THE PRESIDENT--Ruth G. Wester

DIRECTOR, DEVELOPMENT--Harold D. Wilkins, Jr.

DIRECTOR, INTERCOLLEGIATE ATHLETICS--Cecil W. Ingram, Jr.

DIRECTOR, INTERNAL AUDITS--Ernest M. Williams, Jr.

ASSISTANT TO THE PRESIDENT FOR HUMAN AFFAIRS--Freddie L. Groomes

SPECIAL ASSISTANT TO THE PRESIDENT FOR INTERNATIONAL PROGRAMS--

Phillip R. Fordyce

EXECUTIVE DIRECTOR, PLANNING AND ANALYSIS--Grady W. Rea, Jr.

UNIVERSITY ATTORNEY--Gerald B. Jaski

ASSISTANT TO THE PRESIDENT FOR CONTRACT ADMINISTRATION--Lillian H. Mohr

VICE PRESIDENT FOR ACADEMIC AFFAIRS (CHAIRMAN, EXECUTIVE COUNCIL)--

Augustus B. Turnbull, III

DEAN OF THE FACULTIES--Steve Edwards

DEAN, UNDERGRADUATE STUDIES--Elisabeth S. Muhlenfeld

ADMISSIONS--Peter F. Metarko

FINANCIAL AID--E. Edward Marsh

RECORDS AND ADMINISTRATION--Maxwell Carraway, Jr.

SCHOLARSHIP PROGRAMS--Paula L. Barbour-Brennan

DEAN, ARTS AND SCIENCES--Werner A. Baum

DEAN, BUSINESS--E. Ray Solomon

DEAN, COMMUNICATION--Theodore Clevenger

DEAN, CRIMINOLOGY--Eugene H. Czajkoski

DEAN, EDUCATION--Bruce W. Tuckman

DEAN, ENGINEERING--Elvin J. Dantin

DEAN, GRADUATE STUDIES AND RESEARCH--Robert M. Johnson

DEAN, HOME ECONOMICS--Margaret A. Sitton

DEAN, HONORS PROGRAM--Stephen S. Winters

INTERNATIONAL PROGRAMS--Phillip R. Fordyce

DEAN, LAW--Talbot D'Alemberte

DEAN, LIBRARY AND INFORMATION STUDIES--TBA

DEAN, MUSIC--Robert B. Glidden

DEAN, NURSING--Evelyn T. Singer

DEAN, PANAMA CITY CAMPUS--Larson M. Bland

DEAN, SOCIAL SCIENCES--Warren F. Mazek

DEAN, SOCIAL WORK--D. Ray Bardill

DEAN, THEATRE--Gilbert N. Lazier

DEAN, VISUAL ARTS--Jerry L. Draper

ASSOCIATE VICE PRESIDENT, SUPERCOMPUTER INSTITUTE--Joseph E. Lannutti

ASSOCIATE VICE PRESIDENT, COMPUTING AND INFORMATION RESOURCES--Gene T. Sherron

ASSISTANT VICE PRESIDENT AND DIRECTOR, INSTITUTE FOR SCIENCE AND PUBLIC AFFAIRS--

Edward A. Fernald

FLORIDA CENTER FOR PUBLIC MANAGEMENT--William F. Moeller

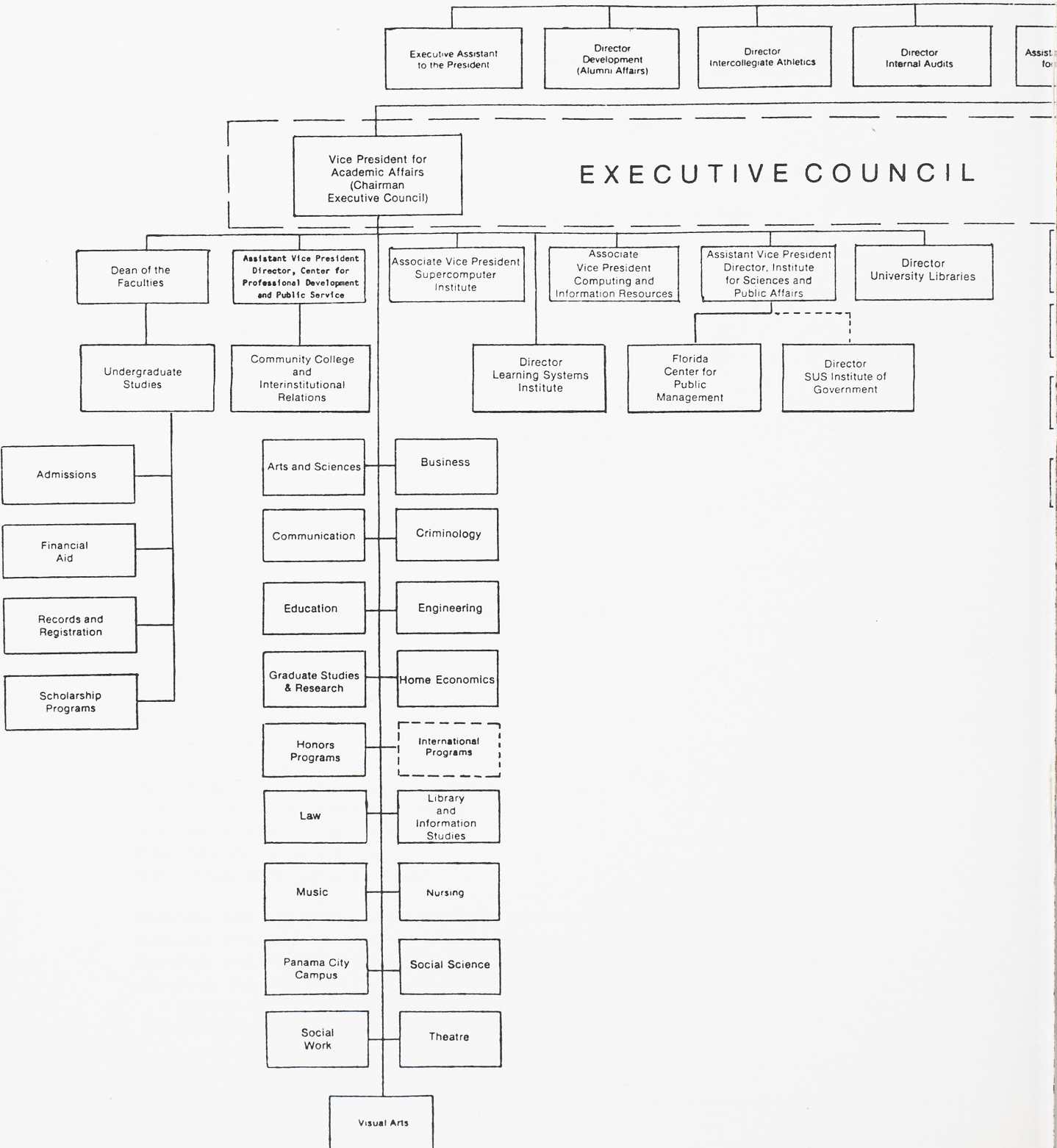
DIRECTOR, SUS INSTITUTE OF GOVERNMENT--John S. Dailey

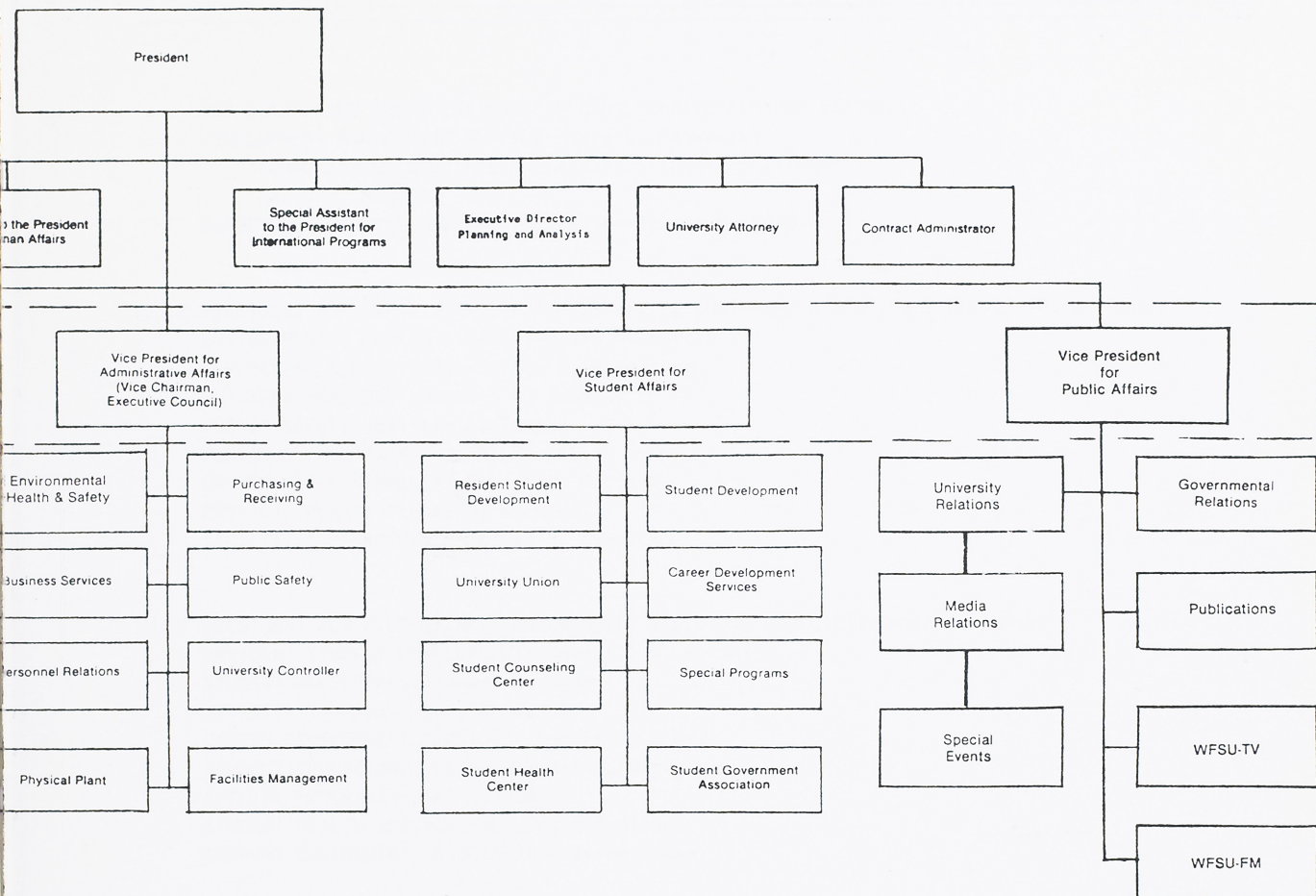
DIRECTOR, UNIVERSITY LIBRARIES--Charles E. Miller



The Florida State University Organization Chart

9/30/84





ORGANIZATIONAL STRUCTURE & CURRENT INCUMBENT

ASSISTANT VICE PRESIDENT AND DIRECTOR, CENTER FOR PROFESSIONAL
DEVELOPMENT AND PUBLIC SERVICE--Mary L. Pankowski

COMMUNITY COLLEGE AND INTERINSTITUTIONAL RELATIONS--

David F. Dahlen

DIRECTOR, LEARNING SYSTEMS INSTITUTE--Robert M. Morgan

VICE PRESIDENT FOR ADMINISTRATIVE AFFAIRS (VICE CHAIRMAN, EXECUTIVE COUNCIL)--B. J. Hodge

ENVIRONMENTAL HEALTH & SAFETY--John U. Martin III

PURCHASING & RECEIVING--Walter B. Parramore

BUSINESS SERVICES--Barbara L. Johnson

PUBLIC SAFETY--William A. Tanner

PERSONNEL RELATIONS--J. R. Robinson

UNIVERSITY CONTROLLER--Robert W. Bodine

PHYSICAL PLANT--Thomas N. Knowles

FACILITIES MANAGEMENT--Steven H. Adamick

VICE PRESIDENT FOR STUDENT AFFAIRS (MEMBER, EXECUTIVE COUNCIL)--Bobby E. Leach

RESIDENT STUDENT DEVELOPMENT--Sherrill W. Ragans

STUDENT DEVELOPMENT--James A. Hayes

UNIVERSITY UNION--Nancy A. Turner

CAREER DEVELOPMENT SERVICES--Robert G. O'Neal

STUDENT COUNSELING CENTER--Daniel J. Montgomery

SPECIAL PROGRAMS--Earl L. Gordon

STUDENT HEALTH SERVICES--L. Frank Gagliano

STUDENT GOVERNMENT ASSOCIATION--Tyron Brown

VICE PRESIDENT FOR PUBLIC AFFAIRS (MEMBER, EXECUTIVE COUNCIL)--Patrick W. Hogan

UNIVERSITY RELATIONS--TBA

GOVERNMENTAL RELATIONS--TBA

MEDIA RELATIONS--Martee Willis

PUBLICATIONS--TBA

SPECIAL EVENTS--A. Alexandra Jupin

WFSU-TV--Edward L. Herp

WFSU-FM--Madison L. Hodges

Source: Office of the President

STUDENT HEADCOUNT BY DISCIPLINE AND LEVEL
FALL, 1984

<u>DISCIPLINE*</u>	<u>UNCLASSIFIED</u>	<u>LOWER DIVISION</u>	<u>UPPER DIVISION</u>	<u>TOTAL UNDERGRADUATE</u>
Architecture & Environmental Design	-	47	206	253
Area & Ethnic Studies	-	3	21	24
Business & Management	-	1,705	2,812	4,517
Communications	-	320	406	726
Computer Science	-	29	27	56
Education	-	313	855	1,168
Engineering	-	241	190	431
Foreign Languages	-	24	70	94
Allied Health	-	24	81	105
Health Sciences	-	144	444	588
Home Economics	-	123	557	680
Law	-	-	-	-
Letters	-	72	275	347
Liberal/General Studies	-	7	37	44
Library & Archival Studies	-	-	12	12
Life Sciences	-	380	393	773
Mathematics	-	366	575	941
Parks & Recreation	-	7	71	78
Philosophy, Religion, & Theology	-	10	27	37
Physical Sciences	-	126	258	384
Psychology	-	223	419	642
Protective Services	-	104	477	581
Public Affairs	-	21	120	141
Social Sciences	-	285	1,193	1,478
Visual & Performing Arts	-	300	518	818
No Category	1,180	1,081	36	1,117
Totals	1,180	5,955	10,080	16,035

*These are new CIP discipline categories effective Fall, 1984. See following table for a list of programs within each CIP category.

Source: Fall (Preliminary) Student Data Course

STUDENT HEADCOUNT BY DISCIPLINE AND LEVEL
FALL, 1984

<u>DISCIPLINE*</u>	<u>BEGINNING GRADUATE</u>	<u>ADVANCED GRADUATE</u>	<u>TOTAL GRADUATE</u>	<u>GRAND TOTAL</u>
Architecture & Environmental Design	29	64	93	346
Area & Ethnic Studies	3	5	8	32
Business & Management	96	124	220	4,737
Communications	17	40	57	783
Computer Science	2	-	2	58
Education	272	715	987	2,155
Engineering	-	-	-	431
Foreign Languages	14	24	38	132
Allied Health	10	31	41	146
Health Sciences	36	29	65	653
Home Economics	23	95	118	798
Law	595	-	595	595
Letters	29	61	90	437
Liberal/General Studies	11	41	52	96
Library & Archival Studies	40	72	112	124
Life Sciences	13	85	98	871
Mathematics	22	74	96	1,037
Parks & Recreation	10	8	18	96
Philosophy, Religion, & Theology	10	24	34	71
Physical Sciences	79	202	281	665
Psychology	25	112	137	779
Protective Services	18	42	60	641
Public Affairs	144	237	381	522
Social Sciences	60	170	230	1,708
Visual & Performing Arts	109	183	292	1,110
No Category	-	-	-	2,297
Totals	1,667	2,438	4,105	21,320

*These are new CIP discipline categories effective Fall, 1984.

Source: Fall (Preliminary) Student Data Course File

FLORIDA STATE UNIVERSITY DEPARTMENTS/PROGRAMS
INCLUDED IN CIP DISCIPLINE CATEGORIES, FALL, 1984

Discipline and Academic Programs

Architecture & Environmental Design

Interior Design
Urban & Regional Planning

Area & Ethnic Studies

American Studies
Asian Studies
Inter-American Studies
Slavic & East European Studies

Business & Management

All programs in the College of Business

Communications

Communication

Computer and Information Sciences

Education

All programs in the College of Education plus Art Education, Home Economics Education, and Music Education

Engineering

Civil Engineering
Electrical Engineering

Foreign Languages

All foreign languages including Greek and Latin which are under the Classical Civilization Department

Allied Health

Medical Technology
Music Therapy
Rehabilitation Counseling

Health Sciences

Audiology & Speech Pathology
Nursing

Home Economics

The College of Home Economics except Home Economics Education

Law

Letters

Classics
Comparative Literature
English

FLORIDA STATE UNIVERSITY DEPARTMENTS/PROGRAMS
INCLUDED IN CIP DISCIPLINE CATEGORIES, FALL, 1984

Liberal/General Studies

Humanities
Liberal & General Studies

Library & Archival Science

Life Sciences

Biological Science
Biochemistry

Mathematics

All Mathematics, plus Statistics

Parks & Recreation

Leisure Services & Studies

Philosophy, Religion, & Theology

Philosophy
Religion

Physical Sciences

Chemical Science
Chemistry
Geology
Geophysical Fluid Dynamics
Meteorology
Molecular Biophysics
Oceanography
Physics

Psychology

Protective Services

Criminology

Public Affairs

Public Administration
Social Work

Social Sciences

Anthropology
Economics
Geography
History
International Affairs
Political Science
Social Science
Sociology

Visual & Performing Arts

Theatre, Dance, Art, Art History, and the School of Music except Music Education
and Music Theory

GEOGRAPHICAL ORIGIN OF STUDENTS BY
FLORIDA COUNTY, FALL TERMS

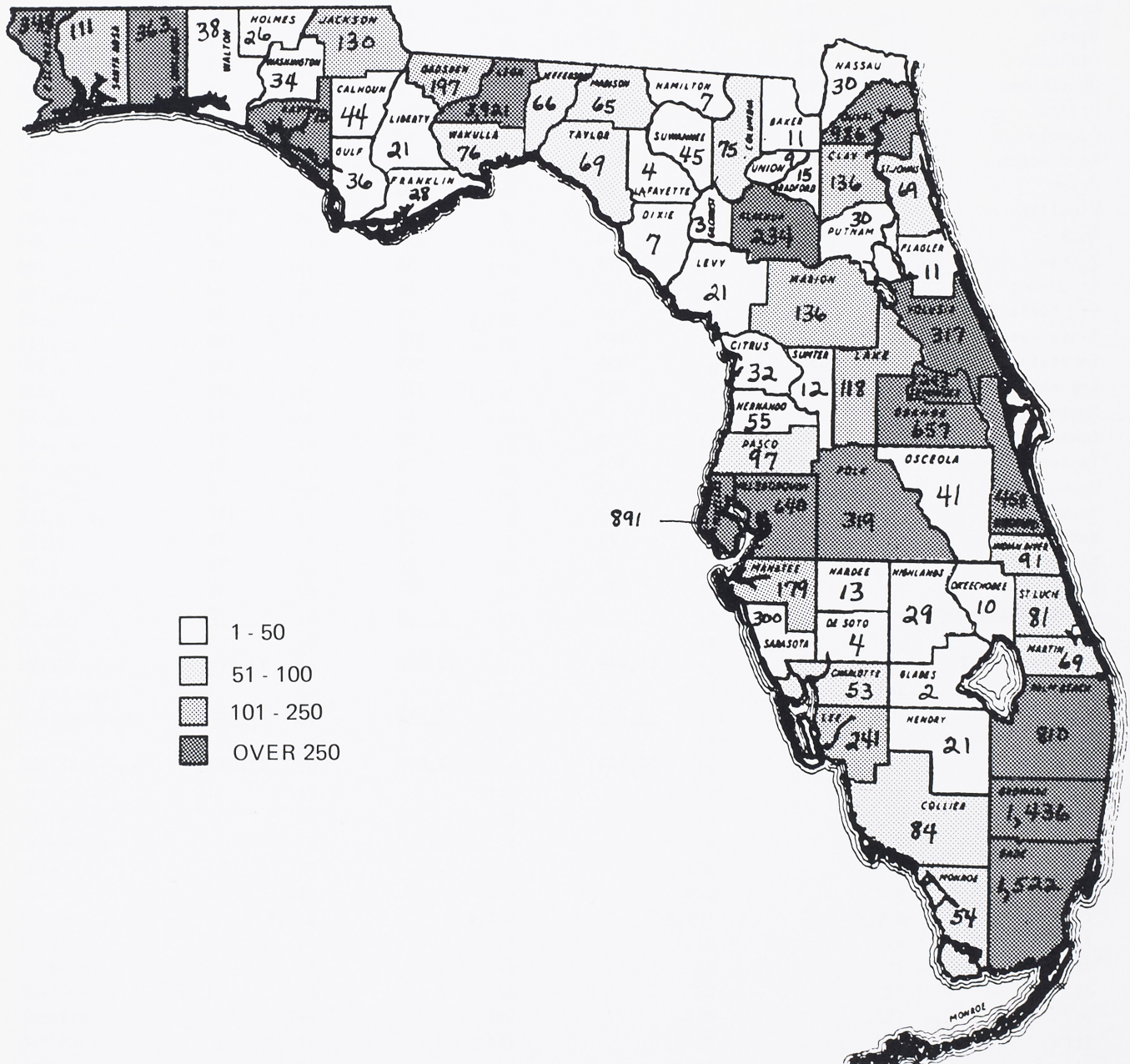
	Fall Quarter 1980	Fall Semester 1981	Fall Semester 1982	Fall Semester 1983	Fall Semester 1984
Alachua	198	216	263	242	234
Baker	12	11	19	13	11
Bay	322	317	783	713	773
Bradford	19	19	13	10	15
Brevard	546	552	542	462	458
Broward	1,443	1,467	1,349	1,335	1,436
Calhoun	43	35	26	40	44
Charlotte	45	39	46	45	53
Citrus	34	37	41	35	32
Clay	151	148	139	149	136
Collier	110	119	102	85	84
Columbia	50	46	53	63	75
Dade	2,141	2,049	1,863	1,643	1,522
DeSoto	7	11	7	5	4
Dixie	4	3	9	5	7
Duval	1,173	1,100	947	963	986
Escambia	460	428	400	365	348
Flagler	12	16	14	14	11
Franklin	17	29	26	27	28
Gadsden	206	184	196	178	197
Gilchrist	15	8	6	5	3
Glades	2	0	0	1	2
Gulf	25	32	29	31	36
Hamilton	9	11	11	11	7
Hardee	10	11	15	11	13
Hendry	18	18	14	14	21
Hernando	38	39	38	47	55
Highlands	43	44	41	36	29
Hillsborough	731	752	721	661	640
Holmes	26	26	23	26	26
Indian River	76	76	79	99	91
Jackson	113	115	117	118	130
Jefferson	94	95	73	78	66
Lafayette	8	8	4	3	4
Lake	151	150	136	137	118
Lee	220	215	236	238	241
Leon	4,313	4,258	4,291	3,995	3,921
Levy	20	23	19	14	21
Liberty	25	18	22	21	21
Madison	66	46	50	52	65
Manatee	194	192	170	177	179
Marion	147	131	129	135	136
Martin	65	73	64	62	69

GEOGRAPHICAL ORIGIN OF STUDENTS BY
FLORIDA COUNTY, FALL TERMS

	Fall Quarter <u>1980</u>	Fall Semester <u>1981</u>	Fall Semester <u>1982</u>	Fall Semester <u>1983</u>	Fall Semester <u>1984</u>
Monroe	79	81	61	55	54
Nassau	43	39	38	30	30
Okaloosa	383	371	349	366	363
Okeechobee	11	12	9	10	10
Orange	758	776	733	655	657
Osceola	33	37	46	38	41
Palm Beach	807	870	787	780	810
Pasco	75	89	98	108	97
Pinellas	1,102	1,069	983	924	891
Polk	383	378	358	328	319
Putnam	55	55	55	43	30
St. Johns	66	69	68	48	69
St. Lucie	93	107	99	92	81
Santa Rosa	138	149	129	126	111
Sarasota	356	355	349	328	300
Seminole	283	291	320	288	293
Sumter	16	15	15	13	12
Suwannee	60	56	57	41	45
Taylor	92	104	76	94	69
Union	10	3	9	8	9
Volusia	388	407	379	337	317
Wakulla	77	71	71	73	76
Walton	47	30	32	34	38
Washington	42	34	31	31	34
County Not Reported	<u>0</u>	<u>1</u>	<u>0</u>	<u>0</u>	<u>0</u>
Counties Total	18,799	18,636	18,278	17,214	17,104
Non-Florida	<u>3,625</u>	<u>3,727</u>	<u>3,742</u>	<u>3,851</u>	<u>4,216</u>
Total	22,424	22,363	22,020	21,065	21,320

Source: Fall (Preliminary) Student Data Course Files

STUDENT HEADCOUNT ENROLLMENT BY FLORIDA COUNTY OF ORIGIN, FALL 1984



GEOGRAPHICAL ORIGIN OF STUDENTS BY STATE
FALL TERMS

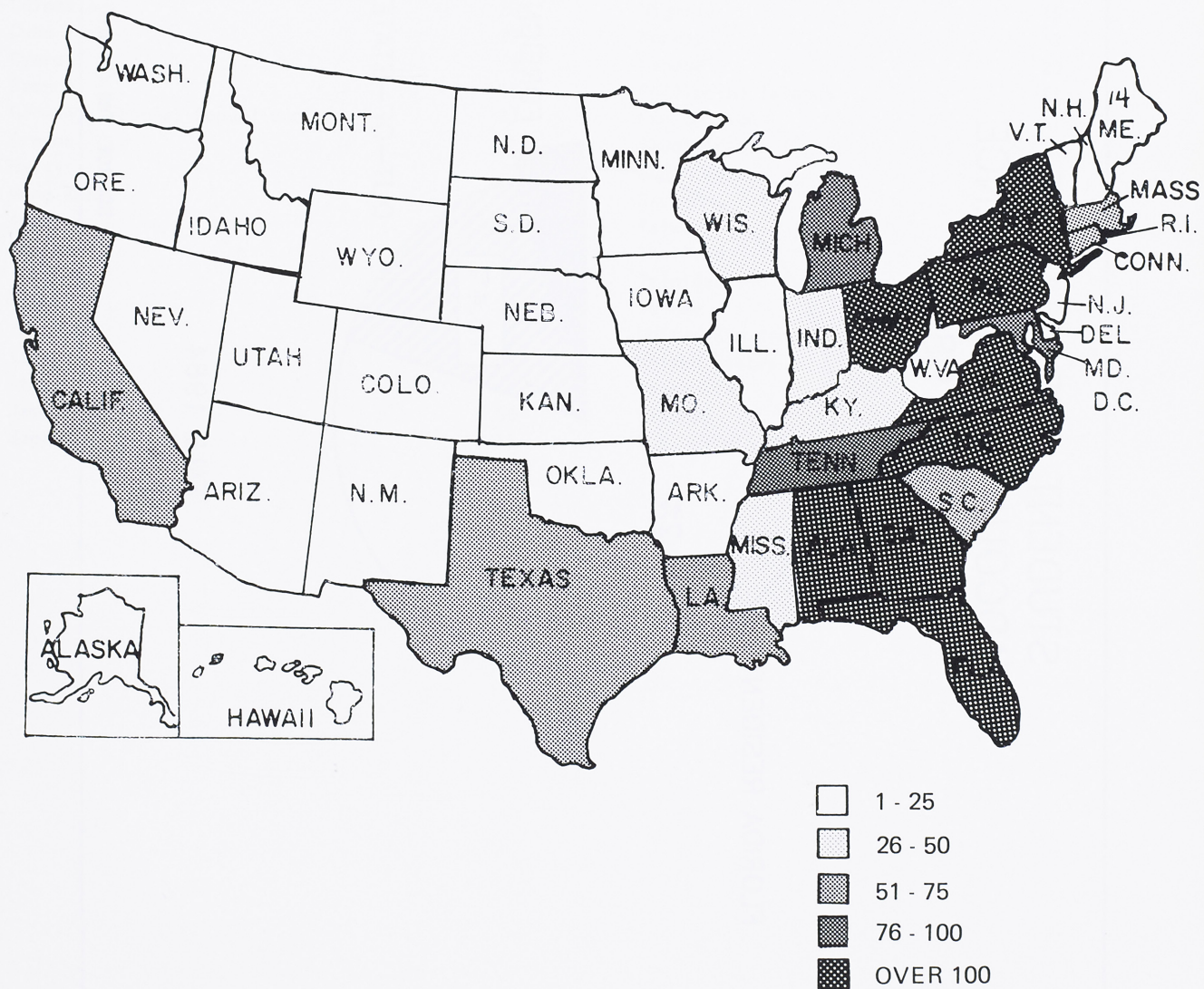
	Fall Quarter <u>1980</u>	Fall Semester <u>1981</u>	Fall Semester <u>1982</u>	Fall Semester <u>1983</u>	Fall Semester <u>1984</u>
Alabama	149	169	191	181	171
Alaska	8	13	10	7	8
Arizona	3	3	3	4	14
Arkansas	12	11	11	15	16
California	53	55	52	58	55
Colorado	17	12	16	19	20
Connecticut	66	62	59	46	67
Delaware	12	12	12	13	12
District of Columbia	3	5	8	12	11
Florida	18,799	18,636	18,278	17,214	17,104
Georgia	540	620	622	628	655
Hawaii	4	2	2	4	4
Idaho	2	4	6	5	4
Illinois	110	96	97	120	145
Indiana	38	44	41	41	44
Iowa	21	19	15	14	15
Kansas	18	12	14	18	14
Kentucky	27	30	37	44	47
Louisiana	55	53	55	64	73
Maine	13	12	14	13	14
Maryland	73	71	77	79	98
Massachusetts	64	58	65	54	69
Michigan	61	73	74	79	97
Minnesota	14	16	20	16	21
Mississippi	50	36	31	47	49
Missouri	28	24	33	36	48
Montana	0	5	5	6	5
Nebraska	11	16	10	7	11
Nevada	2	2	3	3	1
New Hampshire	9	12	19	12	15
New Jersey	141	137	134	154	195
New Mexico	2	5	5	3	6
New York	287	267	245	243	303
North Carolina	142	142	147	131	124
North Dakota	5	3	7	5	6
Ohio	105	117	117	117	126
Oklahoma	17	11	12	12	16
Oregon	7	10	5	8	9
Pennsylvania	149	142	133	118	148
Rhode Island	6	10	10	8	15
South Carolina	107	84	71	65	83
South Dakota	2	5	4	2	5
Tennessee	88	87	92	91	95

GEOGRAPHICAL ORIGIN OF FLORIDA STATE UNIVERSITY STUDENTS BY STATE
FALL TERMS

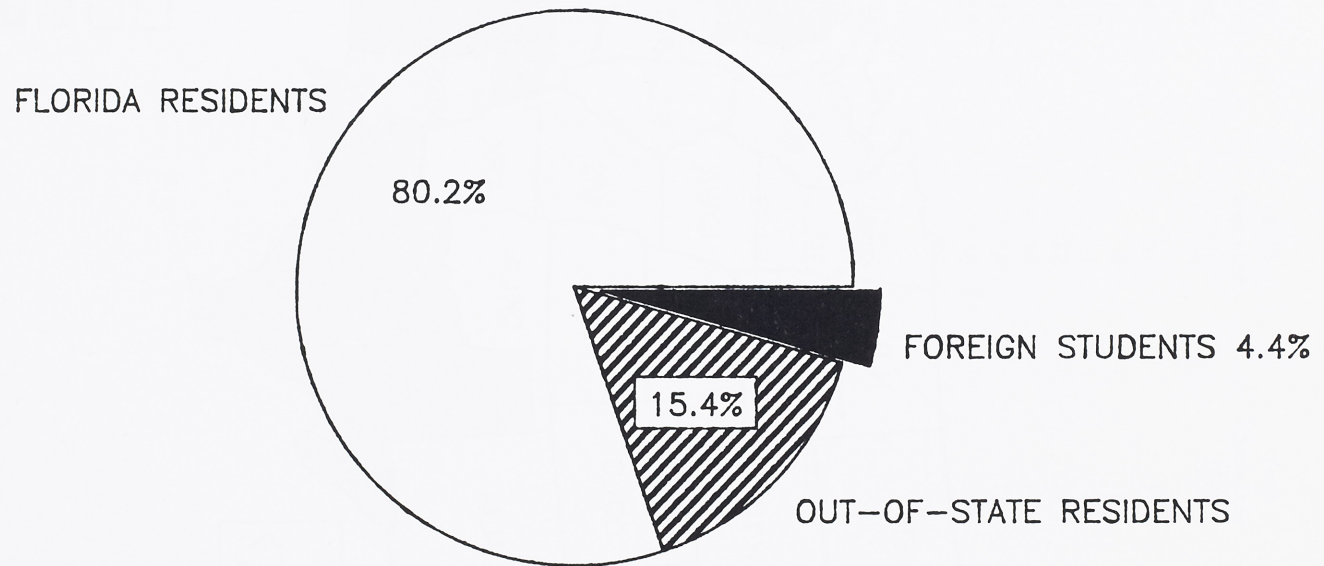
	Fall Quarter <u>1980</u>	Fall Semester <u>1981</u>	Fall Semester <u>1982</u>	Fall Semester <u>1983</u>	Fall Semester <u>1984</u>
Texas	64	57	51	51	57
Utah	11	6	6	7	5
Vermont	4	3	3	7	8
Virginia	189	182	177	195	204
Washington	7	18	19	19	21
West Virginia	20	19	17	17	15
Wisconsin	35	36	35	34	34
Wyoming	<u>2</u>	<u>1</u>	<u>1</u>	<u>2</u>	<u>4</u>
States Total	21,652	21,525	21,171	20,148	20,386
Non-U.S.A.	<u>772</u>	<u>838</u>	<u>849</u>	<u>917</u>	<u>934</u>
Total	22,424	22,363	22,020	21,065	21,320

Source: Fall (Preliminary) Student Data Course File

STUDENT HEADCOUNT ENROLLMENT BY STATE OF ORIGIN, FALL 1984



STUDENT ENROLLMENT HEADCOUNT BY RESIDENCE FALL 1984



FALL 1984

SOURCE: Fall (Prelim) Student Data Course File

GEOGRAPHICAL ORIGIN OF STUDENTS BY NATION*
FALL, 1984

<u>COUNTRY</u>	<u># STUDENTS</u>	<u>COUNTRY</u>	<u># STUDENTS</u>
Arab Republic of Egypt	5	Jordan	14
Argentina	5	Lebanon	6
Bahama Islands	10	Malaysia	35
Brazil	6	Mexico	7
Canada	76	Morocco	5
Chile	6	Netherlands	5
China, People's Republic of	21	Netherlands Antilles	5
Columbia	20	Nigeria	15
Cuba	29	Norway	7
Cyprus	9	Panama	20
France	13	Philippine Islands	13
Germany, Federal Republic of	23	Puerto Rico	57
Greece	11	Saudi Arabia	21
Haiti	5	South Korea	36
Hong Kong	7	Sweden	5
Iceland	6	Taiwan	43
India	21	Thailand	26
Indonesia	11	Trinidad and Tobago	12
Iran	31	Turkey	8
Iraq	5	United Kingdom	41
Israel	6	United States	20,386
Italy	5	Venezuela	48
Jamaica	36	Vietnam	5
Japan	13	U.S. Virgin Islands	7

*Only countries with 5 or more students attending

Source: Fall (Preliminary) Student Data Course File

DEGREES AWARDED BY SCHOOLS AND COLLEGES

	<u>1980-81</u>	<u>1981-82</u>	<u>1982-83</u>	<u>1983-84</u>
COLLEGE OF ARTS & SCIENCES				
Baccalaureate Degree	539	536	611	662
Masters Degree	160	151	119	116
Doctoral Degree	<u>97</u>	<u>85</u>	<u>104</u>	<u>86</u>
Total	796	772	834	864
COLLEGE OF BUSINESS				
Baccalaureate Degree	982	964	1058	1135
Masters Degree	80	137	83	67
Doctoral Degree	<u>4</u>	<u>8</u>	<u>8</u>	<u>8</u>
Total	1066	1109	1149	1210
COLLEGE OF EDUCATION				
Baccalaureate Degree	435	342	329	312
Masters Degree*	260	216	200	188
Doctoral Degree	<u>145</u>	<u>130</u>	<u>113</u>	<u>100</u>
Total	840	688	642	600
COLLEGE OF HOME ECONOMICS				
Baccalaureate Degree	231	217	257	245
Masters Degree	28	21	32	11
Doctoral Degree	<u>16</u>	<u>25</u>	<u>12</u>	<u>18</u>
Total	275	263	301	274
SCHOOL OF LIBRARY & INFORMATION STUDIES				
Baccalaureate Degree	19	11	9	4
Masters Degree*	130	92	65	64
Doctoral Degree	<u>13</u>	<u>8</u>	<u>1</u>	<u>4</u>
Total	162	111	75	72
SCHOOL OF NURSING				
Baccalaureate Degree	115	112	126	109
SCHOOL OF CRIMINOLOGY				
Baccalaureate Degree	255	213	221	215
Masters Degree	17	11	19	11
Doctoral Degree	<u>10</u>	<u>8</u>	<u>12</u>	<u>7</u>
Total	282	232	252	233
COLLEGE OF LAW				
Juris Doctor Degree	185	155	203	196
COLLEGE OF SOCIAL SCIENCES				
Baccalaureate Degree	271	271	317	345
Masters Degree	133	100	99	99
Doctoral Degree	<u>18</u>	<u>22</u>	<u>27</u>	<u>19</u>
Total	422	393	443	463

*Advanced Masters and Specialist Degrees are included with Masters Degrees

DEGREES AWARDED BY SCHOOLS AND COLLEGES

	<u>1980-81</u>	<u>1981-82</u>	<u>1982-83</u>	<u>1983-84</u>
SCHOOL OF SOCIAL WORK				
Baccalaureate Degree	116	76	68	62
Masters Degree	100	98	144	95
Doctoral Degree	<u>2</u>	<u>5</u>	<u>4</u>	<u>1</u>
Total	218	179	216	158
COLLEGE OF COMMUNICATION				
Baccalaureate Degree	250	268	275	277
Masters Degree	69	43	52	58
Doctoral Degree	<u>14</u>	<u>14</u>	<u>3</u>	<u>14</u>
Total	333	325	330	349
SCHOOL OF MUSIC				
Baccalaureate Degree	98	92	74	80
Masters Degree	43	58	73	52
Doctoral Degree	<u>6</u>	<u>6</u>	<u>8</u>	<u>13</u>
Total	147	156	155	145
SCHOOL OF THEATRE				
Baccalaureate Degree	41	26	41	34
Masters Degree	34	32	33	27
Doctoral Degree	<u>8</u>	<u>3</u>	<u>1</u>	<u>2</u>
Total	83	61	75	63
SCHOOL OF VISUAL ARTS				
Baccalaureate Degree	164	192	125	145
Masters Degree	37	39	24	28
Doctoral Degree	<u>3</u>	<u>2</u>	<u>0</u>	<u>1</u>
Total	204	233	149	174
UNIVERSITY DEGREE TOTALS				
Baccalaureate	3516	3320	3511	3625
Masters*	1091	998	943	816
Juris Doctor	185	155	203	196
Doctoral	<u>336</u>	<u>316</u>	<u>293</u>	<u>273</u>
TOTAL	<u>5128</u>	<u>4789</u>	<u>4950</u>	<u>4910</u>

*Advanced Masters and Specialist Degrees are included with Masters Degrees

ALUMNI BY CURRENT RESIDENCE*

Alabama	1,503	Nevada	65
Alaska	79	New Hampshire	118
Arizona	242	New Jersey	730
Arkansas	195	New Mexico	145
California	1,718	New York	1,679
Colorado	478	North Carolina	1,754
Connecticut	375	North Dakota	23
Delaware	95	Ohio	715
D.C.	174	Oklahoma	194
Florida	61,945	Oregon	134
Georgia	5,051	Pennsylvania	757
Hawaii	75	Rhode Island	92
Idaho	44	South Carolina	979
Illinois	791	South Dakota	23
Indiana	340	Tennessee	992
Iowa	130	Texas	1,899
Kansas	164	Utah	81
Kentucky	340	Vermont	56
Louisiana	651	Virginia	1,816
Maine	83	Washington	291
Maryland	861	West Virginia	130
Massachusetts	496	Wisconsin	213
Michigan	354	Wyoming	35
Minnesota	208	Guam	4
Mississippi	431	Puerto Rico	123
Missouri	370	Virgin Islands	29
Montana	43	Other Countries	1,009
Nebraska	75	Residence Unknown	27,523
		TOTAL	118,920

*As of August 1984

ALUMNI CURRENTLY RESIDING IN FLORIDA*
(By County)

Alachua	1,040	Lake	690
Baker	48	Lee	771
Bay	1,098	Leon	13,113
Bradford	70	Levy	99
Brevard	1,759	Liberty	97
Broward	3,354	Madison	271
Calhoun	197	Manatee	714
Charlotte	140	Marion	599
Citrus	149	Martin	226
Clay	441	Monroe	249
Collier	303	Nassau	149
Columbia	247	Okaloosa	1,005
Dade	5,416	Okeechobee	51
De Soto	54	Orange	3,120
Dixie	37	Osceola	163
Duval	4,347	Palm Beach	2,554
Escambia	1,529	Pasco	291
Flagler	42	Pinellas	3,751
Franklin	98	Polk	1,696
Gadsden	861	Putnam	258
Gilchrist	44	St. Johns	369
Glades	5	St. Lucie	308
Gulf	133	Santa Rosa	409
Hamilton	63	Sarasota	1,107
Hardee	77	Seminole	971
Hendry	68	Sumter	89
Hernando	115	Suwannee	216
Highlands	221	Taylor	258
Hillsborough	3,167	Union	34
Holmes	141	Volusia	1,205
Indian River	289	Wakulla	220
Jackson	658	Walton	164
Jefferson	290	Washington	176
Lafayette	51	TOTAL	61,945

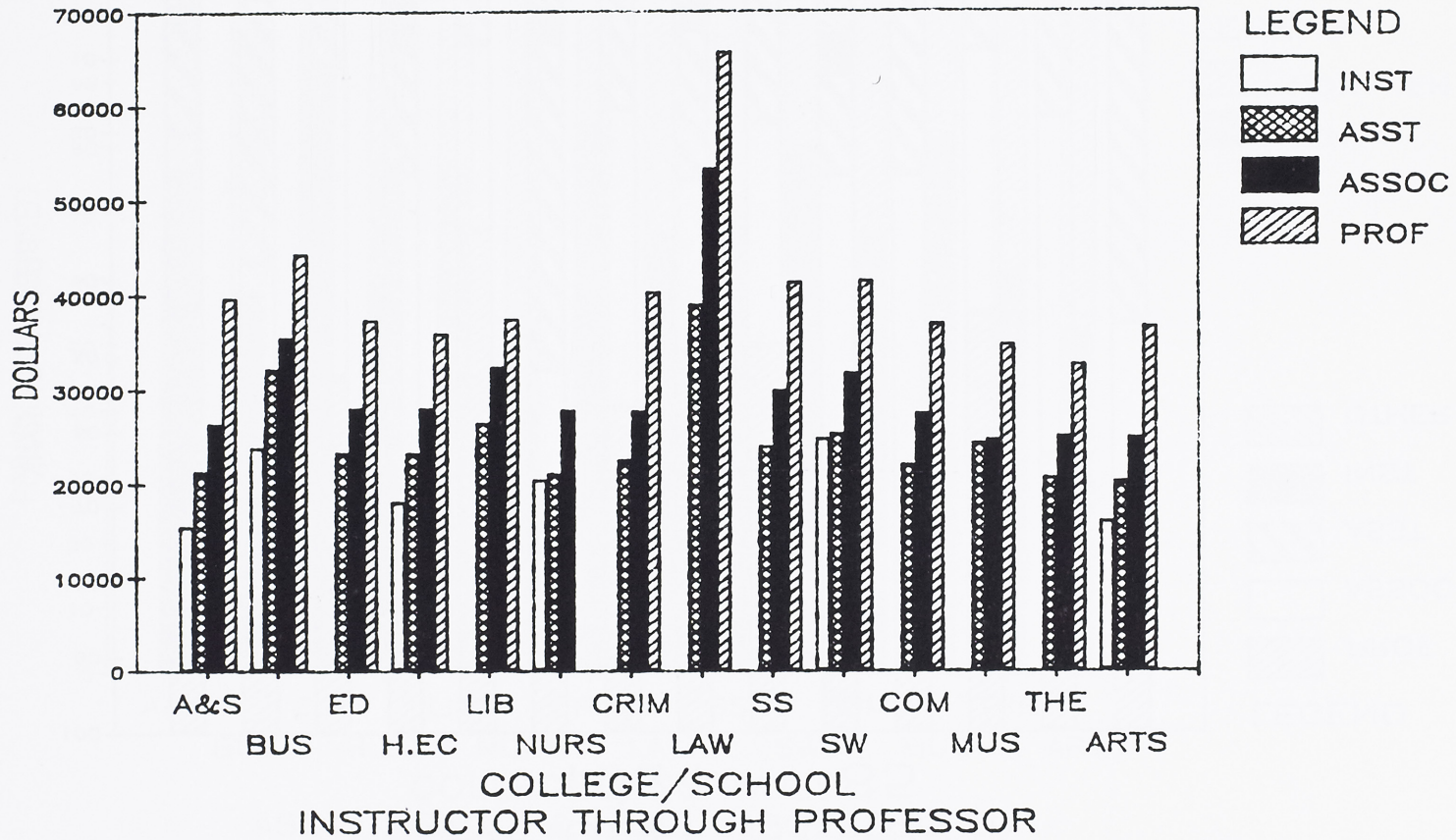
*As of August 1984

Source: Office of Alumni Affairs

FACULTY CHARACTERISTICS
FALL, 1984

- ° Of state funded FTE faculty members, 45 percent hold the rank of Professor, 30 percent are Associate Professors, 20 percent are Assistant Professors, and 1 percent are Instructors
 - ° Six faculty members have been elected members of the National Academy of Sciences. The four currently on the faculty are:
 - Michael Kasha, Chemistry
 - J. Herbert Taylor, Biological Science
 - Louis N. Howard, Mathematics & Computer Science
 - Lloyd M. Beidler, Biological Science
- There are only two other active members at universities in Florida.
- ° 22 percent of full-time faculty are female
 - ° 17 percent of tenured faculty are female
 - ° A total of 1,324 persons are appointed to either full-time or part-time positions on a faculty classification as defined in the State of Florida Personnel Classification System

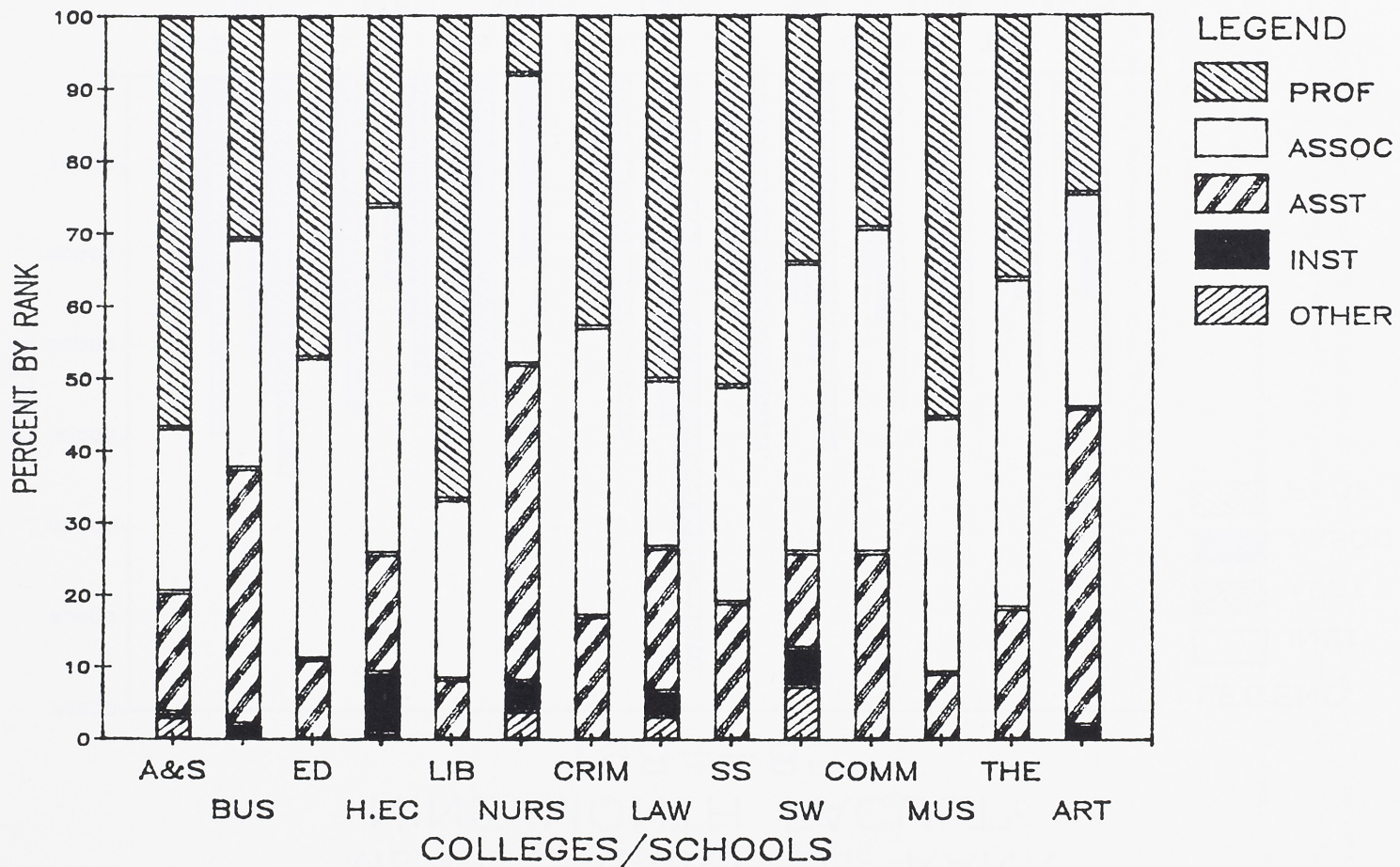
MEAN SALARY BY RANK NINE MONTH FACULTY 1984-85



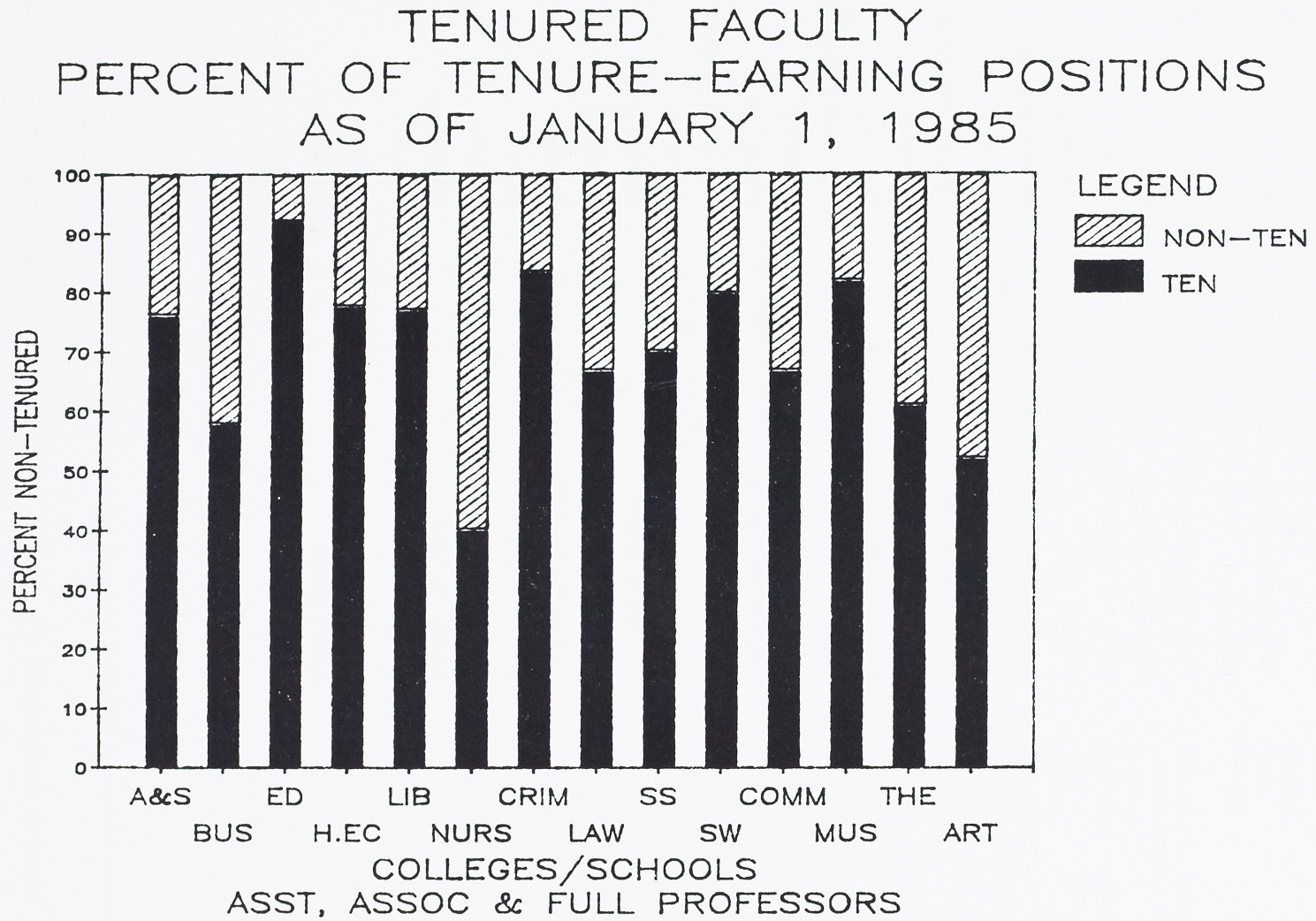
SOURCE: Faculty Salaries Report 1984-85

MEAN SALARY BY RANK FOR NINE-MONTH FACULTY 1984-1985

FACULTY BY RANK 1984 - 85



SOURCE: Faculty Salaries Report 1984-85



SOURCE: FSU Operating Budget 1984-85

THE ROBERT O. LAWTON DISTINGUISHED PROFESSORS

1957-58	William Hudson Rogers	English
1958-59	Marian Doris Irish	Government
1959-60	Anna Forbes Liddell	Philosophy
1960-61	Ernest Max Grunwald	Chemistry
1961-62	Wiley Lee Housewright	Music
1962-63	Michael Kasha	Chemistry
1963-64	Dorothy Lois Breen Hoffman	Modern Languages
1964-65	Carlisle Floyd, Jr.	Music
1965-66	Betty Monaghan Watts	Food and Nutrition
1966-67	Raymond K. Sheline	Chemistry
1967-68	Gregory R. Choppin	Chemistry
1968-69	Eugene D. Nichols	Mathematics Education
1969-70	Earl Frieden	Chemistry
1970-71	Ralph Allan Bradley	Statistics
1971-72	Lloyd Mumbauer Beidler	Biological Science
1972-73	Kellogg Wesley Hunt	English
1973-74	I. Richard Savage	Statistics
1974-75	Daniel Ralph Kenshalo	Psychology
1975-76	Richard Gordon Fallon	Theatre
1976-77	Elena Nikolaidi	Music
1977-78	Richard L. Rubenstein	Religion
1978-79	Seymour L. Hess	Meteorology
1979-80	George M. Harper	English
1980-81	Harry M. Walborsky	Chemistry
1981-82	Robert Gilmer	Mathematics
1982-83	Robert M. Gagne	Educational Research, Development, and Foundations
1983-84	J. Herbert Taylor	Biological Science
1984-85	Leo Mandelkern	Chemistry
	Frank Proschan	Statistics

Source: Office of the President

PRESIDENT'S TEACHING AWARDS
for Excellence in Undergraduate Teaching*

1977-78	James P. Jones, Jr. Clifford K. Madsen H. Peter Stowell	History Music English
1978-79	Sydney R. Grant Colleen J. Kirk James C. Moore	Educational Research, Development, and Foundations Music Audiology and Speech Pathology
1979-80	John R. Albright Patricia A. Dore Kurt G. Hofer	Physics Law Biological Sciences
1980-81	Joyce L. Carbonell Mildred W. Ravenell Patricia Rose	Psychology Law Art
1981-82	Robert C. Clark E. Joe Nosari Michael E. Rashotte	Childhood, Reading, and Special Education Business/Finance Psychology
1982-83	Janice L. Flake Sandra W. Rackley Calvin E. Zongker	Curriculum and Instruction Communication Home and Family Life
1983-84	Fanchon F. Funk John A. Payne William W. Rogers	Educational Leadership Audiology and Speech Pathology History

*These awards continue the precedent established by the Standard Oil/AMOCO Foundation awards which are no longer given.

Source: Office of the President

AMOCO/STANDARD OIL FOUNDATION AWARDS
for Excellence in Undergraduate Teaching

1967	Homer A. Black Donald D. Howard Dorothy M. Schlitt	Business (Accounting) History Science Education
1968	Richard M. Baker, Jr. Joann James Robert J. Kansky	Marketing Modern Languages Mathematics Education
1969	Harrison Chase William H. Heflin William H. Long	Geography Foreign Language Education Meteorology
1970	Azzurra B. Givens Edward K. Mellon Charles T. Wellborn	Modern Languages Chemistry Religion
1971	Ronald J. Clark Carolyn J. Schluck Jerome H. Stern	Chemistry Elementary Education English
1972	Joyotpaul Chaudhuri W. W. de Grummond Jeanne L. Ryan	Government Classics Habilitative Science
1973	John J. Carey Marilyn P. Gombosi Kay Judkins	Religion Home Economics Home Economics
1974	David L. Ammerman Janet G. Burroway James C. Smith	History English Psychology
1975	William T. Lhamon Hans S. Plendl Robert J. Rubanowice	English Physics History
1976	Eugene J. Crook Robert Carter Morris Marjorie F. Sparkman	English Physics Nursing
1977	Richard L. Chapple Leo Sandon, Jr. George E. Weaver	Modern Languages Religion Psychology

Source: Office of Information Services

DEVELOPING SCHOLAR AWARDS

1977-78	Robert L. Conn James Gapinski Daniel S. Simberloff Gunther Stamm	Finance Economics Biological Science Art
1978-79	Jayne M. Alley Burton M. Atkins Virgil L. Goedken James D. Orcutt Friedrich K. Stephan Susan B. Thomas	Music Government Chemistry Sociology Psychology Child Development
1979-80	Karyl J. Louwenaar Randolph R. Rill Leo Sandon William R. Thompson	Music Chemistry Religion Government
1980-81	Scott C. Flanagan Marc E. Freeman Dale A. Olsen Marie W. Osmond Joseph K. Torgesen	Government Biological Science Music Sociology Psychology
1981-82	Robert W. Fichter William F. Marzluff Glenn R. Parker William E. Pelham, Jr. Robert A. Reiser H. Peter Stowell	Art Chemistry Government Psychology Educational Research, Development, and Foundations English
1982-83	Nancy T. de Grummond Nancy R. Green Penelope E. Mason Thomas S. McCaleb Gerald W. McDonald Joseph F. Owens III	Classics Nutrition and Food Science Art History Economics Sociology Physics
1983-84	Meinrat O. Andreae Russell J. Dalton Larry W. Isaac Gerald P. Schatten Harold E. Van Wart	Oceanography Political Science Sociology Biological Science Chemistry
1984-85	Ronald C. Braswell Allan J. Clarke Mark J. Martinko Samuel L. Tabor Joseph Travis	Finance Oceanography Management Physics Biological Science

Source: Office of the President

ENDOWED CHAIRS

Endowed chairs have been established for the purpose of attracting outstanding faculty to the Florida State University in order to provide excellence in teaching and research in a designated scholarly field. Eminent Scholars Chairs are established through contributions from the private sector and matching funds from the Florida Endowment Trust Fund. The Florida State University presently has the following Endowed Chairs, nine of which will be Eminent Scholars Chairs when fully funded. (Funding is complete for all chairs listed below in capital letters.)

THE BURT REYNOLDS EMINENT SCHOLARS CHAIR IN PROFESSIONAL AND
REGIONAL THEATRE

THE MAXIMILLIAN E. AND MARION O. HOFFMAN EMINENT SCHOLARS CHAIR IN
THEATRE

THE CLAUDE AND MILDRED PEPPER EMINENT SCHOLARS CHAIR IN SOCIAL
GERONTOLOGY

The Thomas L. Williams Jr. Eminent Scholars Chair in Business
Administration

The Jerry Collins Eminent Scholars Chair in Public Administration

The Eminent Scholars Chair in Home Economics

The Eminent Scholars Chair in Economic Education

The Payne H. and Charlotte H. Midyette Eminent Scholars Chair of
Insurance

The Syde P. Deeb Eminent Scholars Chair in Political Science

THE WILLIAM O. CULLOM ENDOWED CHAIR IN FINANCE

Source: The Florida State University Foundation, Inc.

INSTITUTES AND RESEARCH CENTERS

Public service, along with instruction and research, is one of the three primary missions of the Florida State University. Almost all university faculty and organizational units, at some time, participate in this public service mission; for some units, this is a primary assignment. Institutes and Research Centers are established to provide specific research, service, and instructional support to users and clients both within and outside the university community. The following list indicates the established Institutes and Research Centers by administrative area.

President's Area

Center for Yugoslav-American Studies, Research, and Exchanges
Center for Economic Education

University Relations

WFSU-FM
WFSU-TV

Center for Professional Development and Public Service

Center for Professional Development and Public Service
Center for Intensive English Studies

Learning Systems Institute

Learning Systems Institute
Center for Educational Technology
Center for Needs Assessment and Planning
Center for Instructional Support
Center for International Studies

Institute of Government (a State University System Institute)

Institute of Government

Institute of Science and Public Affairs

Institute of Science and Public Affairs
Florida Resources and Environmental Analysis Center
Center for Advancement of Procurement
Center for Employment Relations and Law
Environmental Hazards Center
Center for Biomedical and Toxicological Research
Florida Economic Forecasting Center
Florida State Climate Center
Family Services Center
Beaches and Shores Resource Center
Center for Aquatic Research and Resource Management
Center for Arts Administration
Hoyt Center for Land Economics and Real Estate
Florida Center for Public Management
Center for Productivity Improvement
Center for Comparative/Development Administration

INSTITUTES AND RESEARCH CENTERS

College of Arts and Sciences

Humanities Institute
Institute of Molecular Biophysics
Center for Cell Reproduction and Development
Center for Color Graphics
Center for the Humanities and the Arts
Center for the Study of Values
Statistical Consulting Center
Nuclear Services
Institute for Future Resources
Geophysical Fluid Dynamics Institute
Antarctic Research Facility
Southeast Archeological Center
Institute of Cognitive Sciences
Polar Desert Research Center

Institute for Business Research and Service

Small Business Development Center
Small Business Institute
Center for Information Systems Research
Real Estate Research Center
Center for Insurance Research
Center for Applied Behavioral Research
Florida Economic Development Center
Futures Research Center
Center for Accounting Research
Center for Personnel and Industrial Relations Research
Center for Financial Analysis
Center for Banking and Financial Institutions

College of Education

Florida State University Developmental Research School
Center for Multi-Campus Systems
Institute for Studies in Higher Education
State and Regional Higher Education Center
Center for Educational Research Evaluation Services
Center for the Studies of Women in Educational Management Systems
Educational Systems Planning Center
Institute of Departmental Leadership
Center for Studies in Vocational Education
Social Studies Material Development Center for Greek Speaking Students
Teacher Education Center

College of Home Economics

Center for Marriage and Family Therapy
Resource Materials Center

INSTITUTES AND RESEARCH CENTERS

College of Social Sciences

Institute for Social Science Research
Multi-disciplinary Center on Gerontology
Center for the Study of Population
Policy Sciences Center

College of Communication

Communication Research Center
Institute of Motion Picture, Television, and Recording Arts
Regional Rehabilitation Center
Speech and Hearing Clinic

School of Music

Center for Music Research
Center for Music of the Americas

School of Theatre

Institute for Professional Theatre, Television and Film Training
Charles MacArthur Center for American Theatre

School of Visual Arts

Institute of Contemporary Art

Graduate Studies and Research

Laboratory Animal Resources Unit
Florida State University Marine Laboratory
Florida State University Computing Center

Supercomputer Computations Research Institute

Supercomputer Computations Research Institute

Source: Office of Vice President for Academic Affairs

The Center for Professional Development and Public Service is the University's central support unit for continuing education and other educational outreach activities offered on behalf of the University. The Center's mission is to bring together outstanding resources from the University and beyond to meet current and evolving learning needs of individuals and organizations in Florida and the nation. The Center provides a system of integrated services to program sponsors and clients, including technical assistance, consultation, needs assessment, and a full range of program development, meeting management, and evaluation services.

The Center administers all non-credit continuing education programs which are offered on the campus or in off-campus locations convenient to participants. The Center also administers all off-campus credit courses and degree programs, and credit institutes which may be conducted either on or off-campus. For non-credit programs, the Center provides, on a fee-for-service basis, essential services to program sponsors and participants, as well as a complete range of optional program development and management services, and other technical assistance which program sponsors may request. Similar services are available to sponsoring academic units and participating faculty for the design and delivery of off-campus credit programs and other credit activities which fall within the Center's area of responsibility.

The Center operates, for the University, the Florida State Conference Center, which provides the University and the State of Florida with a specially designed facility for hosting educational conferences, meetings, workshops, and related activities. This facility enhances the University's capabilities and resources to meet the expanding market for professional conference and meeting management services.

Through its Continuing Studies Unit, the Center provided administrative support for 328 credit offerings in 1983-84, including regular credit courses, credit institutes, and special summer workshops conducted in: Florida; London and Oxford, England; Florence, Italy; and Dhahran and Abqaiq, Saudi Arabia.

Source: The Center for Professional Development and Public Service

THE CENTER FOR PROFESSIONAL DEVELOPMENT AND PUBLIC SERVICE
INSTRUCTIONAL ACTIVITIES

<u>NON-CREDIT</u>	<u>1980-81</u>	<u>1981-82</u>	<u>1982-83</u>	<u>1983-84</u>
Programs Conducted	497	527	789	766
Number of Participants	22,223	19,084	31,933	30,506
Continuing Education Units (CEUs) Generated*	34,502	34,061	37,831	57,802
Total Instructional Hours	345,018	340,610	378,310	578,020
<u>CREDIT</u>	<u>1980-81</u>	<u>1981-82</u>	<u>1982-83</u>	<u>1983-84</u>
Off-Campus Credit Courses Conducted	252	212	272	328
Number of Registrations	4,676	3,988	4,410	4,037
Total Student Credit Hours	16,373	11,845	11,790	9,343

* Both individual and institutional CEUs

Note: CEU is the nationally recognized, standard unit of measurement for participation in non-credit continuing education.

Source: The Center for Professional Development and Public Service

THE CENTER FOR PROFESSIONAL DEVELOPMENT AND PUBLIC SERVICE

CREDIT COURSES OFFERED BY FLORIDA COUNTY, 1983-84

<u>COUNTY</u>	<u>TOTAL</u>
Alachua	14
Bay	5
Columbia	9
Dade	4
Duval	9
Escambia	13
Gadsden	1
Hillsborough	10
Jackson	1
Leon	188
Madison	1
Orange	17
Palm Beach	7
St. Johns	1
Taylor	1
Wakulla	1
Other (overseas)	<u>46</u>
TOTAL	328

CREDIT COURSES OFFERED BY COLLEGE OR SCHOOL, 1983-84

<u>COLLEGE OR SCHOOL</u>	<u>NO. OF CREDIT COURSES</u>
Arts and Sciences	44
Business	8
Communication	4
Criminology	13
Education	121
Home Economics	9
Law	7
Library and Information Studies	4
Nursing	4
Social Sciences	44
Social Work	51
Theatre	<u>19</u>
TOTAL	328

Source: The Center for Professional Development and Public Service

THE CENTER FOR PROFESSIONAL DEVELOPMENT AND PUBLIC SERVICE
DEGREE PROGRAMS OFFERED

<u>SCHOOL/COLLEGE AND MAJOR</u>	<u>DEGREE</u>	<u>LOCATION</u>
<u>College of Education</u>		
Educational Administration	Ed.D.	Panama City
Educational Administration	Ed.D.	Pensacola
Higher Education	Ed.D.	Pensacola
Adult Education	Ed.D.	Miami
Reading Education	M.S.	Lake City
Health Education	B.S., M.S.	Tallahassee
Multilingual/Multicultural Education	M.S.	Saudi Arabia
<u>School of Library and Information Studies</u>		
Library Science	M.S.	Jacksonville
<u>School of Criminology</u>		
Criminology	B.S.	Lake City
Criminology	M.S.	Tallahassee
<u>College of Social Sciences</u>		
Public Administration	M.P.A.	Tallahassee
Urban and Regional Planning	M.S.	Orlando
<u>School of Social Work</u>		
Social Work	M.S.W.	Orlando
Social Work	M.S.W.	Tallahassee
Social Work	M.S.W.	Gainesville
Social Work	M.S.W.	Jacksonville

Source: The Center for Professional Development and Public Service

On October 1, 1984, The Florida State University, together with the Control Data Corporation and the U.S. Department of Energy, established the Supercomputer Computations Research Institute (SCRI) -- the first such federally funded institute in this country.

The SCRI will arrange access to the supercomputer for Department of Energy scientists throughout the United States, who will have first priority to about 65% of the access.

The SCRI hardware access will be to a CDC CYBER 205 Class VI supercomputer with four million words of memory and two pipes. It will be replaced early in 1987 with a CYBER 250 (formerly called the GF-10) -- the class VII parallel architecture supercomputer presently being developed by ETA Systems, Inc. The SCRI hardware will therefore complement the CRAY-XMP which will also be available to DOE scientists through the National Magnetic Fusion Energy Computer Network (NMFENET). The FSU CYBER 250 is projected to consist of four CPU's each of which has four million words of local memory and a cycle time about four times faster than a CYBER 205.

The DOE portion of the SCRI research program will entail research in the computational needs of the DOE Energy Research programs for analytical and numerical methods and advanced computer concepts. In general, the SCRI major emphasis will be research on techniques for large-scale computations utilizing supercomputers with various architectural characteristics, through their use on actual problems in traditional scientific research. The SCRI will bring together participants from various disciplines to share knowledge regarding solutions to common computational problems.

The SCRI will arrange periodic workshops and conferences, and will also offer visiting and/or permanent appointments for scientists and postdoctoral research associates who wish to participate in the SCRI research program.

FSU is sponsoring the SCRI and providing various kinds of campus space, service, and facilities. In agreements to support the SCRI for the first five years, the DOE will fund approximately 70% of the project; the Florida Legislature has appropriated special support funds, including 13 new tenure track faculty positions; and the Control Data Corporation will provide special equipment and personnel to assist in the research.

Scientists wishing to participate in the SCRI program or desiring access to the supercomputer resources of the SCRI should write for further information to: Supercomputer Computations Research Institute, The Florida State University, Tallahassee, Florida 32306. Telephone (904) 644-1010.

Source: Supercomputer Computations Research Institute

UNIVERSITY LIBRARIES

The Robert Manning Strozier Library has volume holdings totaling almost 1,500,000 books and periodicals, over 125,000 maps, and over 770,000 government documents. Bibliographic subject searches are available as well as access to many data bases in the sciences and social sciences. The Micro-materials Center includes almost 2,000,000 microforms including film, cards, and fiche.

Extensions of the library include: the Warren D. Allen Music Library, located in the School of Music, which contains a collection of over 70,000 recordings and over 33,000 scores; the Law Library, located in a new building connected to the College of Law, which contains over 120,000 volumes and over 90,000 microfilm volume equivalents; and located in the School of Library and Information Studies Building, the Library School Library, which contains over 50,000 books and periodicals as well as films, audio tapes, and microfilms.

The total staffing for the library system is 149.5 FTE. Of these, 55 are professional librarians.

	<u>1980-1981</u>	<u>1981-1982</u>	<u>1982-1983</u>	<u>1983-1984</u>
Volumes in Library	1,370,739	1,413,613	1,448,753	1,478,254
Volumes Added (net)	47,449	42,874	35,140	29,501
Total Microforms	2,011,634	2,105,272	2,388,395	2,482,300
Periodicals and Serials Subscriptions	15,682	15,541	15,935	20,686
Staff Salaries (including Student Assistants)	\$2,289,437	\$2,638,899	\$2,116,975	\$2,477,870
Expenditures for Books and Related Materials	\$1,961,413	\$1,636,511	\$1,723,455	\$1,465,151
Binding	\$149,418	\$119,052	\$90,202	\$80,503
Other Operating Expenditures	\$437,027	\$415,214	\$244,699	\$283,790
Per Student Total Operating Expenditures	\$214.80	\$212.71	\$187.51	\$198.69
Library Expenditures as a Percentage of University Totals (% of E&G)	5.92	5.08	4.09	3.97

NOTE: Periodicals and serials are currently on standing order. Law Library figures are included.

Source: Strozier Library

STUDENT ORGANIZATIONS

The Florida State University offers a wide variety of extracurricular activities and student organizations to enrich student campus life.

The largest and most pervasive student organization is the Student Government Association which represents the entire student body. There are 54 elected offices in the Executive, Legislative, and Judicial Branches, the Union Board, and the Alumni Council, and over 100 appointed offices in Student Government. Some of the elected and appointed positions are paid positions in Student Government.

Within Student Government proper there are 13 agencies and 4 funding boards. Some of the agencies are service oriented, such as Students Helping Students, Student Employment Service, Volunteer Opportunities Center, Student Consumer Services and Off-Campus Housing, Student Legal Services, Information Services, Student Alert Force and Escort Service (SAFE), and the Center for Participant Education (CPE). Other agencies serve special interests. Examples of these are the Black Student Union, Jewish Student Union, and Women's Center.

For funding purposes, registered student organizations are divided into four groups, with a separate board set up by Student Government for each of them. These four groups are law school organizations, sports and recreation organizations, Greek organizations, and all other student organizations. Together the funding boards allocate Activity and Service (A&S) Fees to over 200 registered student organizations representing a diverse array of special interest groups.

The Student Activities and Organizations staff serves the registered organizations by facilitating the annual organization registration process, assisting the organizations with their programming and budgetary development, and providing the organizations a central filing space.

More detailed information on student organizations and programs is available in the Student Handbook.

Source: Office of the Vice President for Student Affairs

INTERCOLLEGIATE ATHLETICS

The Florida State University sponsors teams representing the university in sixteen intercollegiate sports for men and women; eight teams currently compete in varsity athletic competition for both men and women. The official designations of these teams is "Seminoles" for the men's teams, and "Lady Seminoles" for the women's teams. The current competitive intercollegiate sports and their coaches are listed below.

DIRECTOR OF ATHLETICS--CECIL W. (HOOTIE) INGRAM, JR.

MEN'S SPORTS

<u>Sport</u>	<u>Head Coach</u>
*Baseball	Mike Martin
*Basketball	Joe Williams
Cross Country	John Brogle
Football	Bobby Bowden
*Golf	Verlyn Giles
*Swimming	Bill Shults
*Tennis	Richard McKee
*Track	Dick Roberts

WOMEN'S SPORTS

DIRECTOR OF WOMEN'S ATHLETICS--BARBARA PALMER

<u>Sport</u>	<u>Head Coach</u>
*Basketball	Janice Dykehouse-Allen
Cross Country	Gary Winckler
Golf	Verlyn Giles
Softball	JoAnn Graf
*Swimming	Terry Maul
*Tennis	Anne Rizza
Track	Gary Winckler
*Volleyball	Cecile Reynaud

(*) Denotes competition sport in the Metro Athletic Conference.

Source: Florida State University Sports Information Office

GLOSSARY

A & P -- Administrative and Professional -- A State of Florida pay plan for middle and upper level administrative and professional positions.

Contracts and Grants -- A budget entity which deals primarily with sponsored research activities and federally funded educational grants.

Educational and General -- A budget entity which provides instructional programs leading to formal degrees, and for research and public service programs.

Faculty -- A person appointed to a position defined by the State of Florida Personnel Classification system as faculty; categories include Professor, Associate Professor, Assistant Professor, and Instructor. Occupation Code ranges for University faculty are from 9001-9015, 9020-9110, and 9115-9179.

Florida Endowment Trust Fund for Eminent Scholars -- The Trust Fund established in the State Treasury for Eminent Scholars provides the opportunity to each state university to match and receive challenge grants to create endowments for selected eminent scholars to occupy Chairs within the university.

FTE -- (Full-time Equivalent) -- A numerical designator for an appointment based on 100% for full time. An FTE for a full-time employee is 1.00 (Two people each serving in half-time faculty positions would equal, together, one FTE faculty position.)

FTE Calculation Factors -- Under the semester system, the factors for calculating the number of student FTE's generated are as follows:

Summer Term: 10 undergraduate student credit hours equals 1 FTE;
8 graduate student credit hours equals 1 FTE

Fall and

Spring Terms: 15 undergraduate student credit hours equals 1 FTE;
12 graduate student credit hours equals 1 FTE.

Full-Time Filled Position -- A position in which a person or persons are appointed at a total FTE of 1.00.

Major Code -- A six-digit number assigned to an area of study designated as the student's major field. (The diploma given by the university indicates the degree awarded and the Board of Regents approved degree program.)

Occupation Code -- A four-digit code which indicates the title and general description of the position to which a person is appointed. Occupation codes range from 0001 to 9179 and 9200 to 9499 for regular salaried positions. The range 9180-9199 is reserved for student related titles. Graduate assistants, post doctorates and fellows are appointed to classifications within this range. All codes within this latter range are paid through OPS. Faculty, A&P and Career Service may be appointed on OPS in the entire range of occupation codes, however, this is limited primarily to faculty appointments.

OPS - Other Personal Services -- This is one of two sources of salary funds. Persons paid from OPS are performing temporary work of some nature. There is no continuing obligation on the part of the state toward persons on OPS appointments.

Preliminary Headcount Enrollment -- These figures represent all students regardless of fee classification.

GLOSSARY

State Fundable Student Credit Hours (SFSCH) -- Those student credit hours for which the University receives funding by the state. Not all student credit hours are fundable -- specifically, credit hours produced by some waivers of fees are not state fundable.

Lower Level SCH: Hours generated by courses numbered 2999 and below.

Upper Level SCH: Hours generated by courses numbered 3000-4999.

Graduate Level SCH: Hours generated by courses numbered 5000 and above, except thesis and dissertation courses.

Thesis: Hours generated by courses numbered 5971.

Dissertation: Hours generated by courses numbered 6980.

Student -- A person who has indicated a desire to be associated with an academic program of the University in an officially recognized capacity.

Student Classification Level (from Student Data Course File) --

Lower Division: A student who has earned fewer than 60 semester credit hours (90 quarter hours).

Upper Division: A student who has earned 60 semester credit hours (90 or more quarter hours); or has an AA degree, or is working toward an additional bachelor's degree.

Beginning Graduate: A graduate student who has been formally admitted to a graduate degree program but who is not an advanced graduate student.

Advanced Graduate: A graduate student who has been formally admitted to a recognized doctoral or post-masters degree program and who has accumulated 36 semester credit hours (54 or more quarter hours) toward his/her degree program, or has a master's degree.

Unclassified: A student not admitted to a degree program.

Student Course Loads (FSU Bulletin) -- Students are classified on the basis of semester hours earned as follows:

Freshmen Zero to 30 semester hours (0-35 quarter hours)

Sophomore 30 to 59 semester hours (minimum of 36 quarter hours)

Junior 60 to 80 semester hours and all lower division requirements (a minimum of 84 quarter hours).

Senior 90 semester hours (minimum of 132 quarter hours)

Graduate any student admitted to a graduate program

Unclassified

Special Non-Degree Seeking without Baccalaureate Degree

Special Non-Degree Seeking with Baccalaureate Degree

Provisional

Transient

High School Students

GLOSSARY

Student FTE -- A measure of student enrollment based on the number of student credit hours for which students enroll. Twelve to fifteen semester credit hours equal one student FTE at the undergraduate level; twelve semester credit hours equal one student FTE at the graduate level.

Student Headcount Enrollment -- The actual number of individual students enrolled at a specified time regardless of whether the students are attending full-time or part-time.

Tenure -- The condition attained by a faculty member through highly competent scholarly activities which assures the faculty member security of employment and immunity from reprisals or threats due to an intellectual position or belief which may be unpopular, and which guarantees annual reappointment for that faculty member until voluntary resignation, retirement, or removal for adequate cause.

